



## **FORGED FITTINGS**

- ASME B16.11 – Socket Welding and Threaded Forged Fittings. MSS SP-43 – Wrought and Fabricated Butt-Welding Fittings for Low Pressure, Corrosion Resistant Applications. MSS SP-95 – Swage(d) Nipples and Bull Plugs. BS3799 – Specification for Steel pipe fittings, screwed and Socket-welding for the petroleum industry. ASTM A182 – ASME SA182 – Standard Specification for Wrought Austenitic Stainless Steel Piping Fittings.



## **INNOVATIVE TECHNIQUE FOR CUSTOMISED SOLUTION**

***Our Production Facilities Match International Standards.***

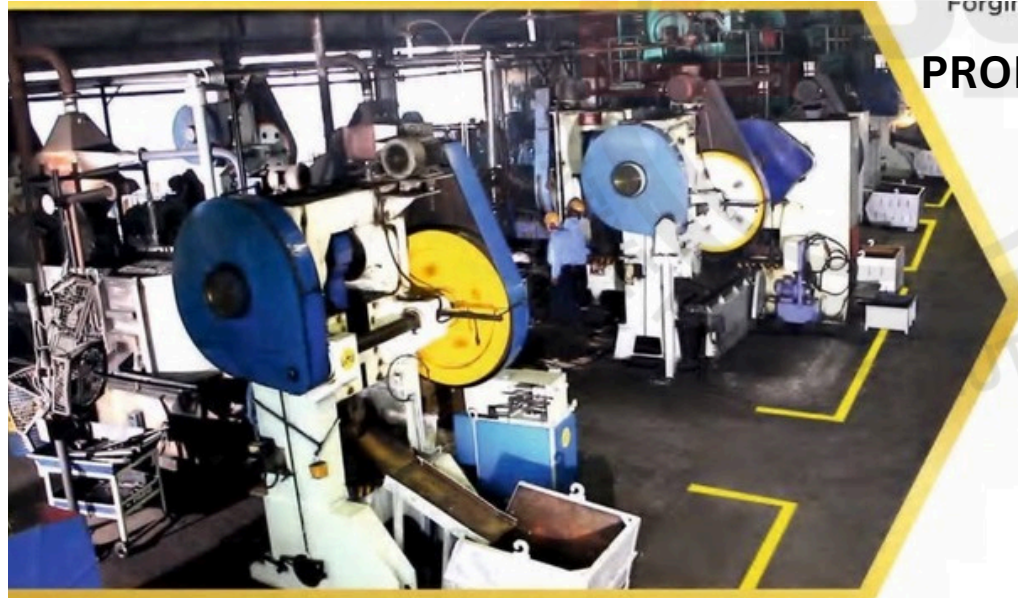
*We at Creative piping solutions pvt. ltd continuously aim in giving Customised Solution as far as Manufacturing and delivery is Concerned. Building upon our humble beginning, we have, with time changed our production facilities and added State of Art Machinery, in die making, machining, Leak-testing and Packaging.*

*We have Incorporated Quality Standards on the Shop Floor aiming at a durable Product.*

*Systematizing the working environment and Improving the very lives of our working team benefiting one and all.*

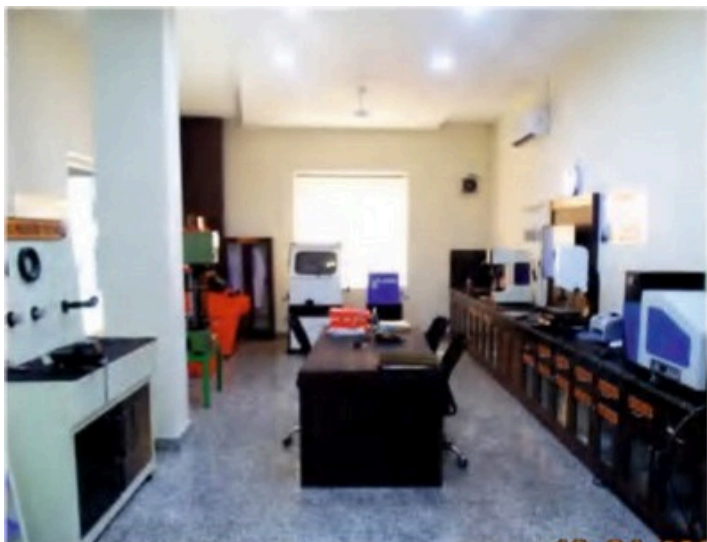


**C.N.C. Die Making Machine**



## **PRODUCTION FACILITIES**

- FORGING
- TESTING
- DIE MAKING
- MACHINING
- PACKAGING
- Forging Section



**Testing Lab**



**Forging Section**



CNC Shop



Machine Shop



Creative Piping (UNIT I)



Creative piping (UNIT II)

**Creative Piping Solutions Private Limited** has been manufacturing high-class Hand tools from day one and will continue with its efforts to maintain this quality level to create a long lasting relationship with its international customers. The entire team associated with this company has one common goal, and that is, Superb Quality & Customer Satisfaction.

Quality, integrity ethics and commitment have been the mottos of our company all these years and have been our guiding philosophy as an organisation. We have indentified and chiselled our core strengths to fulfill newer roles in the changing business environment. Investments in state-of-art Technology, Manpower training, Research & development - our endeavours are totally customer-centric as we constantly strive to deliver excellence and efficiency to the best of their satisfaction.

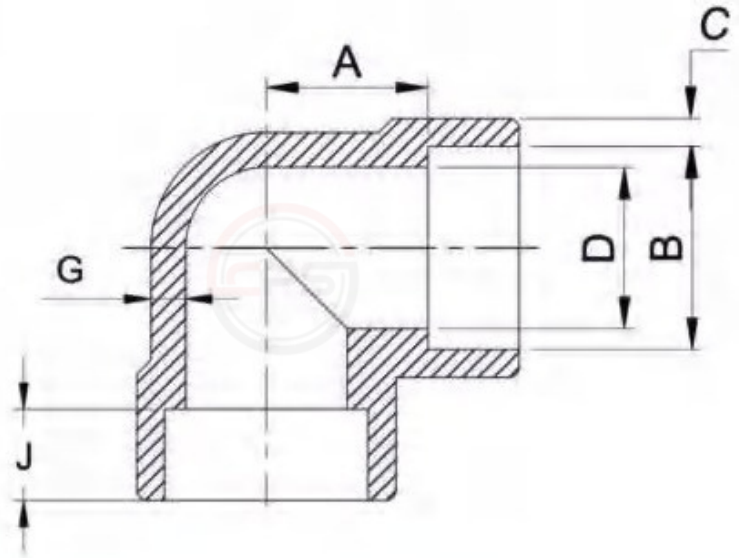
I am highly thankful to all our worthy customers for their continuous and valuable support and I look forward with great interest to new business relationships. Come join us and I am sure you will feel that you have made the right choice.

Art No. CPS- 3002

## Socket Weld elbow 90°

Forged 3000 LBS BLACK  
Manufacturing 'CPS' pipe fittings for big chemical and pharmaceutical industries asks for perfection.

Our socket welding elbow live up to the required standards of perfection in quality and endurance,



**Class Designation: 3000 Lbs**      **Dimensions 'CPS' As Per ASME B16.11-2011/IS:4712:2011 (Class 20)**

**CREATIVE PIPING SOLUTIONS PRIVATE LIMITED**

[www.creativeforged.com](http://www.creativeforged.com)

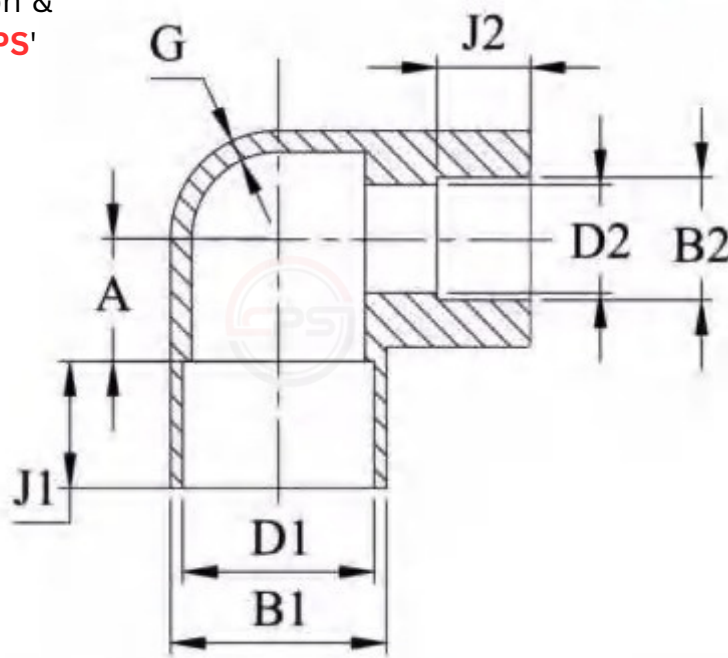
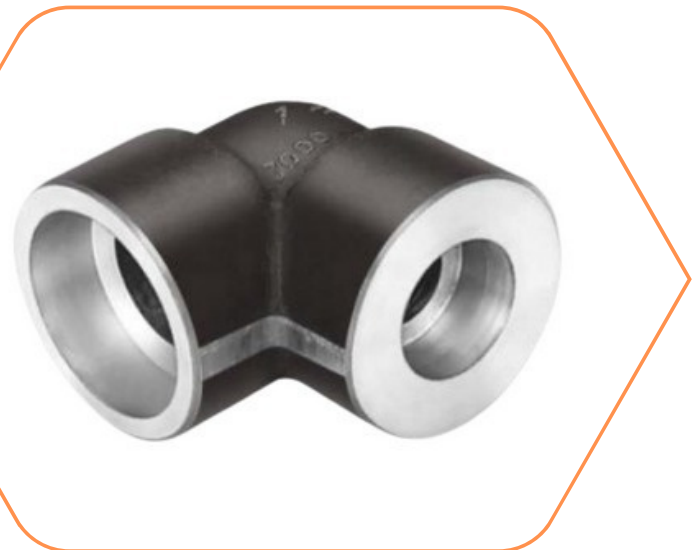
Nominal Size		Socket Bore Dia B		Bore Dia of fitting Dia D		Socket Wall Thickness C	MIN. Depth of Socket J	Centre Bottom of Socket A		Body Wall Thickness G
Inch	MM	Min.	Max.	Min.	Max.	Min.	Min.	Min.	Max.	Min.
1/8"	6.00	10.80	11.20	6.10	7.60	3.18	10.50	11.00	12.00	2.41
1/4"	8.00	14.20	14.60	8.50	10.00	3.30	10.50	11.00	12.00	3.02
3/8"	10.00	17.60	18.00	11.80	13.30	3.50	10.50	13.50	15.00	3.20
1/2"	15.00	21.80	22.20	15.00	16.60	4.09	10.50	15.50	17.00	3.73
3/4"	20.00	27.20	27.60	20.20	21.70	4.27	13.50	19.00	20.50	3.91
1"	25.00	33.90	34.30	25.90	27.40	4.98	13.50	22.50	24.00	4.55
1.1/4"	32.00	42.70	43.10	34.30	35.80	5.28	13.50	27.00	29.00	4.85
1.1/2"	40.00	48.80	49.20	40.10	41.60	5.54	13.50	32.00	34.00	5.08
2"	50.00	61.20	61.70	51.70	53.30	6.04	17.00	38.00	40.00	5.54
2.1/2"	65.00	73.90	74.40	61.20	64.20	7.67	18.00	42.00	43.50	7.01
3"	80.00	89.80	90.30	76.40	79.40	8.30	18.00	57.00	59.50	7.62
4"	100.00	115.20	115.70	100.70	103.80	9.35	19.00	66.50	68.00	8.56

Art No. CPS- 3002

# Reducing Socket Weld Elbow 90°

Forged 3000 LBS BLACK

The aviation asks for nothing less than perfection & we provide perfection in every piece branded 'CPS'



**CREATIVE**  
PIPING SOLUTIONS PVT. LTD.  
ISO 9001:2015, 14001:2004, 18001:2007 Certified Company

Class Designation: 3000 Lbs      Dimensions 'CPS' As Per ASME B16.11-2011/IS:4712:2011 (Class 20)

**CREATIVE PIPING SOLUTIONS PRIVATE LIMITED**      ([www.creativeforged.com](http://www.creativeforged.com))

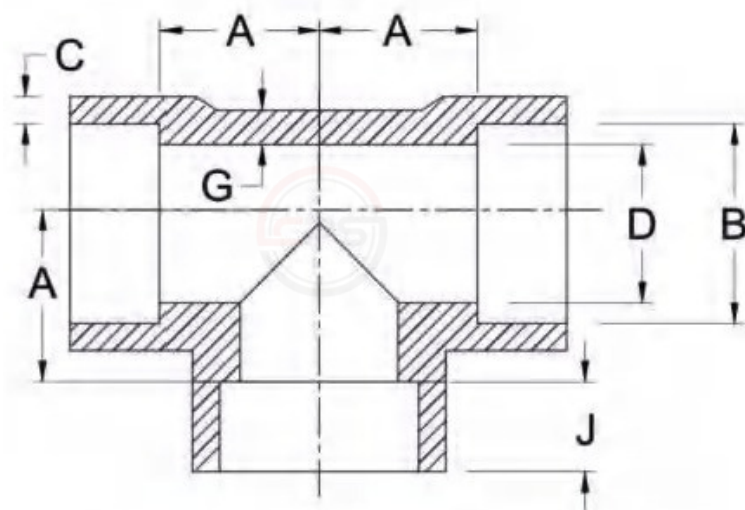
Nominal Size	Socket Bore Dia B1		Socket Bore Dia B2		Bore Dia of Fitting Dia D1		Bore Dia of Fitting Dia D2		Socket Wall Thickness C	Depth of socket (J)		Centre Bottom of socket A		Body Wall Thickness G		
	Inch	MM	Min.	Max.	Min.	Max.	Min.	Max.		Min.	Max.	Min.	Max.		Min.	
1/4" X 1/8"	8 X 6		14.20	14.60	10.8	11.20	8.50	10.00	6.10	7.60	3.78	J1	J2	10.00	12.00	3.02
3/8" X 1/4"	10 X 8		17.60	18.00	14.20	14.60	11.80	13.30	8.50	10.00	4.01	J1	J2	12.00	15.00	3.20
1/2" X 3/8"	15 X 10		21.80	22.00	17.60	18.00	15.00	16.60	11.80	13.30	4.67	J1	J2	14.00	17.00	3.73
3/4" X 1/2"	20 X 15		27.20	27.60	21.80	22.20	20.20	21.70	15.00	16.60	4.90	J1	J2	18.00	21.00	3.91
1" X 1/2"	25 X 15		33.90	34.30	21.80	22.20	25.90	27.40	15.00	16.60	5.69	J1	J2	20.00	24.00	4.55
1" X 3/4"	25 X 20		33.90	34.30	27.20	27.60	25.90	27.40	20.20	21.70	5.69	J1	J2	20.00	24.00	4.55
1.1/4" X 3/4"	32 X 20		42.70	43.10	27.20	27.60	34.30	35.80	20.20	21.70	6.07	J1	J2	25.00	29.00	4.85
1.1/4" X 1"	32 X 25		42.70	43.10	33.90	34.30	34.30	35.80	25.90	27.40	6.07	J1	J2	25.00	29.00	4.85
1.1/2" X 1"	40 X 25		48.80	49.20	33.90	34.30	40.10	41.60	25.90	27.40	6.35	J1	J2	30.00	34.00	5.08
1.1/2" X 1.1/4"	40 X 32		48.80	49.20	42.70	43.10	40.10	41.60	34.30	35.80	6.35	J1	J2	30.00	34.00	5.08
2" X 1.1/4"	50 X 32		61.20	61.70	42.70	43.10	51.70	53.30	34.30	35.80	6.93	J1	J2	35.00	40.00	5.54
2" X 1.1/2"	50 X 40		61.20	61.70	48.80	49.20	51.70	53.30	40.10	41.60	6.93	J1	J2	36.00	40.00	5.54
2.1/2" X 1.1/2"	65 X 40		73.20	74.40	48.80	49.20	61.20	64.20	40.10	41.60	8.76	J1	J2	38.50	43.50	7.01
2.1/2" X 2"	65 X 50		73.20	74.40	61.20	61.70	61.20	64.20	51.70	53.30	8.76	J1	J2	38.50	43.5	7.01
3" X 2.1/2"	80 X 65		89.80	90.30	73.90	74.40	76.40	79.40	61.20	64.20	9.52	J1	J2	54.5	59.50	7.62
3" X 2"	80 X 50		89.80	90.30	61.20	61.70	76.40	79.40	51.70	53.30	9.52	J1	J2	54.50	59.50	7.62

Art No. CPS- 3003

## Socket Weld Tee

Forged 3000 LBS BLACK

These '**CPS**' fittings are used in steam run applications like turbines and boilers because of their strength to curtail high pressures.



**Class Designation: 3000 Lbs**      **Dimensions 'CPS' As Per ASME B16.11-2011/IS:4712:2011 (Class 20)**

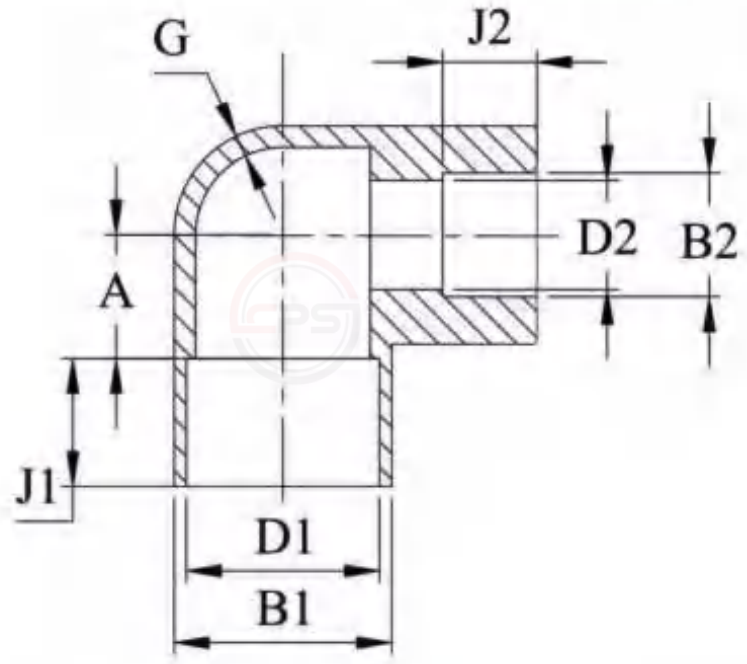
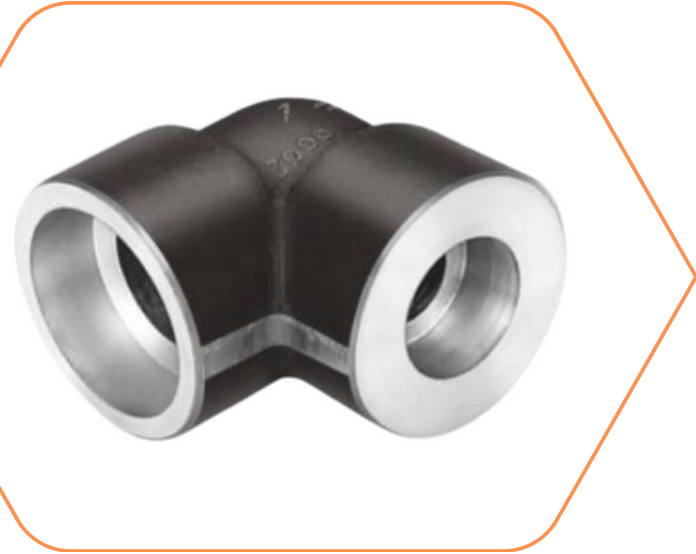
CREATIVE PIPING SOLUTIONS PRIVATE LIMITED							<a href="http://www.creativeforged.com">www.creativeforged.com</a>			
Nominal Size		Socket Bore Dia B		Bore Dia of fitting Dia D		Socket Wall Thickness C	MIN. Depth of Socket J	Centre Bottom of Socket A		Body Wall Thickness G
Inch	MM	Min.	Max.	Min.	Max.	Min.	Min.	Min.	Max.	Min.
1/8"	6.00	10.80	11.20	6.10	7.60	3.18	10.50	11.00	12.00	2.41
1/4"	8.00	14.20	14.60	8.50	10.00	3.30	10.50	11.00	12.00	3.02
3/8"	10.00	17.60	18.00	11.80	13.30	3.50	10.50	13.50	15.00	3.20
1/2"	15.00	21.80	22.20	15.00	16.60	4.09	10.50	15.50	17.00	3.73
3/4"	20.00	27.20	27.60	20.20	21.70	4.27	13.50	19.00	20.50	3.91
1"	25.00	33.90	34.30	25.90	27.40	4.98	13.50	22.50	24.00	4.55
1.1/4"	32.00	42.70	43.10	34.30	35.80	5.28	13.50	27.00	29.00	4.85
1.1/2"	40.00	48.80	49.20	40.10	41.60	5.54	13.50	32.00	34.00	5.08
2"	50.00	61.20	61.70	51.70	53.30	6.04	17.00	38.00	40.00	5.54
2.1/2"	65.00	73.90	74.40	61.20	64.20	7.67	18.00	42.00	43.50	7.01
3"	80.00	89.80	90.30	76.40	79.40	8.30	18.00	57.00	59.50	7.62
4"	100.00	115.20	115.70	100.70	103.80	9.35	19.00	66.50	68.00	8.56

Art No. CPS- 3002

# Reducing Socket Weld Elbow 90°

Forged 3000 LBS BLACK

The aviation asks for nothing less than perfect... we provide perfection in every piece branded




Class Designation: 3000 Lbs Dimensions 'CPS' As Per ASME B16.11-2011/IS:4712:2011 (Class 20)

**CREATIVE PIPING SOLUTIONS PRIVATE LIMITED** ([www.creativeforged.com](http://www.creativeforged.com))

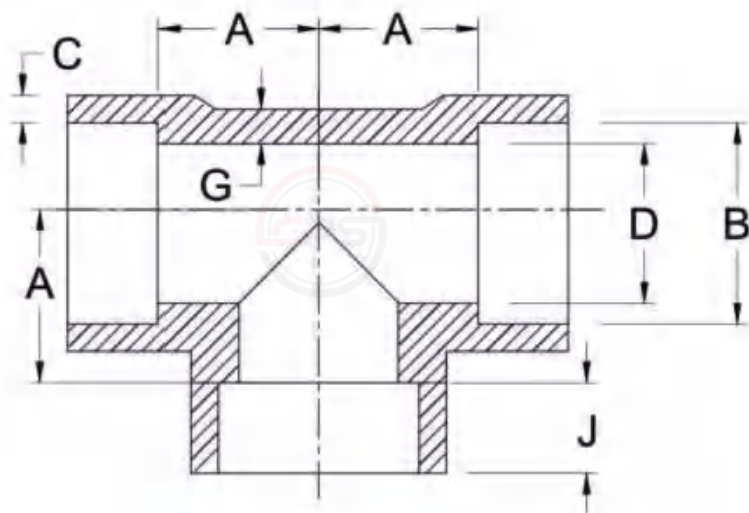
Nominal Size	Socket Bore Dia B1		Socket Bore Dia B2		Bore Dia of Fitting Dia D1		Bore Dia of Fitting Dia D2		Socket Wall Thickness c	Depth of socket (J)		Centre Bottom of socket A		Body Wall Thickness G		
	Inch	MM	Min.	Max.	Min.	Max.	Min.	Max.		Min.	J2	Min.	Max.		Min.	
1/4" X 1/8"	8 X 6		14.20	14.60	10.8	11.20	8.50	10.00	6.10	7.60	3.78	10.50	10.50	10.00	12.00	3.02
3/8" X 1/4"	10 X 8		17.60	18.00	14.20	14.60	11.80	13.30	8.50	10.00	4.01	10.50	10.50	12.00	15.00	3.20
1/2" X 3/8"	15 X 10		21.80	22.00	17.60	18.00	15.00	16.60	11.80	13.30	4.67	10.50	10.50	14.00	17.00	3.73
3/4" X 1/2"	20 X 15		27.20	27.60	21.80	22.20	20.20	21.70	15.00	16.60	4.90	13.50	10.50	18.00	21.00	3.91
1" X 1/2"	25 X 15		33.90	34.30	21.80	22.20	25.90	27.40	15.00	16.60	5.69	13.50	10.50	20.00	24.00	4.55
1" X 3/4"	25 X 20		33.90	34.30	27.20	27.60	25.90	27.40	20.20	21.70	5.69	13.50	13.50	20.00	24.00	4.55
1.1/4" X 3/4"	32 X 20		42.70	43.10	27.20	27.60	34.30	35.80	20.20	21.70	6.07	13.50	13.50	25.00	29.00	4.85
1.1/4" X 1"	32 X 25		42.70	43.10	33.90	34.30	34.30	35.80	25.90	27.40	6.07	13.50	13.50	25.00	29.00	4.85
1.1/2" X 1"	40 X 25		48.80	49.20	33.90	34.30	40.10	41.60	25.90	27.40	6.35	13.50	13.50	30.00	34.00	5.08
1.1/2" X 1.1/4"	40 X 32		48.80	49.20	42.70	43.10	40.10	41.60	34.30	35.80	6.35	13.50	13.50	30.00	34.00	5.08
2" X 1.1/4"	50 X 32		61.20	61.70	42.70	43.10	51.70	53.30	34.30	35.80	6.93	16.00	13.50	35.00	40.00	5.54
2" X 1.1/2"	50 X 40		61.20	61.70	48.80	49.20	51.70	53.30	40.10	41.60	6.93	16.00	16.00	36.00	40.00	5.54
2.1/2" X 1.1/2"	65 X 40		73.20	74.40	48.80	49.20	61.20	64.20	40.10	41.60	8.76	16.00	16.00	38.50	43.50	7.01
2.1/2" X 2"	65 X 50		73.20	74.40	61.20	61.70	61.20	64.20	51.70	53.30	8.76	16.00	16.00	38.50	43.5	7.01
3" X 2.1/2"	80 X 65		89.80	90.30	73.90	74.40	76.40	79.40	61.20	64.20	9.52	16.00	16.00	54.5	59.50	7.62
3" X 2"	80 X 50		89.80	90.30	61.20	61.70	76.40	79.40	51.70	53.30	9.52	16.00	16.00	54.50	59.50	7.62

Art No. CPS- 3003

## Socket Weld Tee

Forged 3000 LBS BLACK

These '**CPS**' fittings are used in steam run applications like turbines and boilers because of their strength to curtail high pressures.



**CREATIVE**  
PIPING SOLUTIONS PVT. LTD  
ISO 9001:2015, 14001:2004, 18001:2007 Certified Company

Class Designation: 3000 Lbs      Dimensions 'CPS' As Per ASME B16.11-2011/IS:4712:2011 (Class 20)

**CREATIVE PIPING SOLUTIONS PRIVATE LIMITED**

[www.creativeforged.com](http://www.creativeforged.com)

Nominal Size		Socket Bore Dia B		Bore Dia of fitting Dia D		Socket Wall Thickness C	MIN. Depth of Socket J	Centre Bottom of Socket A		Body Wall Thickness G
Inch	MM	Min.	Max.	Min.	Max.	Min.	Min.	Min.	Max.	Min.
1/8"	6.00	10.80	11.20	6.10	7.60	3.18	10.50	11.00	12.00	2.41
1/4"	8.00	14.20	14.60	8.50	10.00	3.30	10.50	11.00	12.00	3.02
3/8"	10.00	17.60	18.00	11.80	13.30	3.50	10.50	13.50	15.00	3.20
1/2"	15.00	21.80	22.20	15.00	16.60	4.09	10.50	15.50	17.00	3.73
3/4"	20.00	27.20	27.60	20.20	21.70	4.27	13.50	19.00	20.50	3.91
1"	25.00	33.90	34.30	25.90	27.40	4.98	13.50	22.50	24.00	4.55
1.1/4"	32.00	42.70	43.10	34.30	35.80	5.28	13.50	27.00	29.00	4.85
1.1/2"	40.00	48.80	49.20	40.10	41.60	5.54	13.50	32.00	34.00	5.08
2"	50.00	61.20	61.70	51.70	53.30	6.04	17.00	38.00	40.00	5.54
2.1/2"	65.00	73.90	74.40	61.20	64.20	7.67	18.00	42.00	43.50	7.01
3"	80.00	89.80	90.30	76.40	79.40	8.30	18.00	57.00	59.50	7.62
4"	100.00	115.20	115.70	100.70	103.80	9.35	19.00	66.50	68.00	8.56

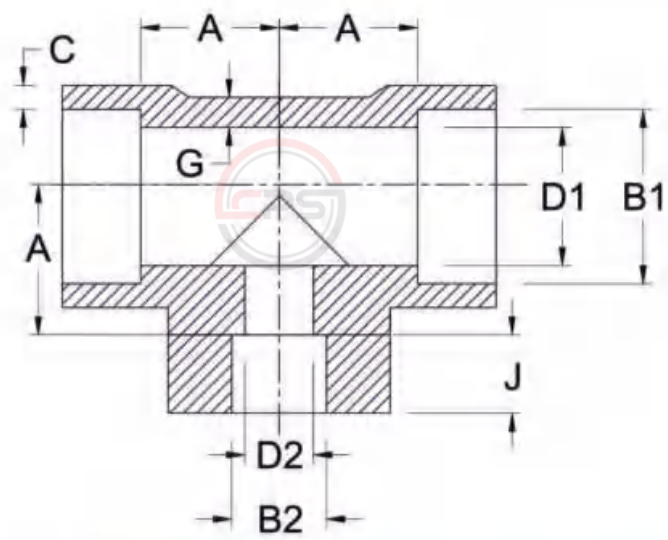


Art No. CPS- 3003

# Reducing Socket Weld Tee

Forged 3000 LBS BLACK

These 'CPS' fittings are synonymous to precision & they prove in every field of application




**Class Designation: 3000 Lbs** **Dimensions 'CPS' Reducing Socket Weld Tee**

**CREATIVE PIPING SOLUTIONS PRIVATE LIMITED** *(www.creativeforged.com)*

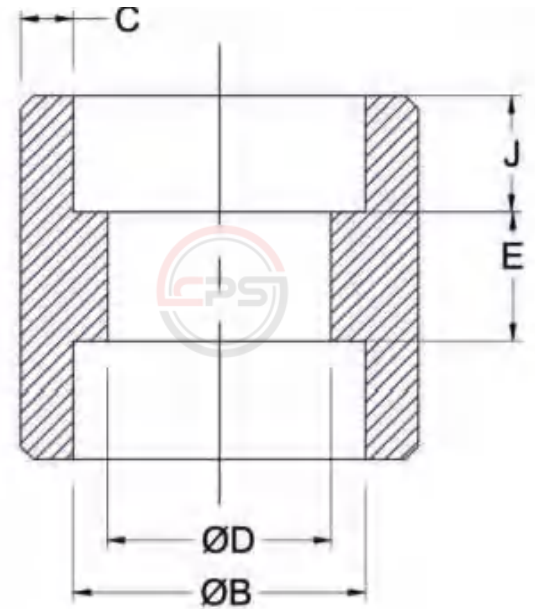
Nominal Size	Socket Bore Dia B1		Socket Bore Dia B2		Bore Dia of Fitting Dia D1		Bore Dia of Fitting Dia D2		Socket Wall Thickness C	Depth of socket (J)		Centre Bottom of socket A		Body Wall Thickness G		
	Inch	MM	Min.	Max.	Min.	Max.	Min.	Max.		Min.	Max.	Min.	Max.		Min.	
1/4" X 1/8"		8 X 6	14.20	14.60	10.8	11.20	8.50	10.00	6.10	7.60	3.78	10.50	10.50	10.00	12.00	3.02
3/8" X 1/4"		10 X 8	17.60	18.00	14.20	14.60	11.80	13.30	8.50	10.00	4.01	10.50	10.50	12.00	15.00	3.20
1/2" X 3/8"		15 X 10	21.80	22.00	17.60	18.00	15.00	16.60	11.80	13.30	4.67	10.50	10.50	14.00	17.00	3.73
3/4" X 1/2"		20 X 15	27.20	27.60	21.80	22.20	20.20	21.70	15.00	16.60	4.90	13.50	10.50	18.00	21.00	3.91
1" X 1/2"		25 X 15	33.90	34.30	21.80	22.20	25.90	27.40	15.00	16.60	5.69	13.50	10.50	20.00	24.00	4.55
1" X 3/4"		25 X 20	33.90	34.30	27.20	27.60	25.90	27.40	20.20	21.70	5.69	13.50	13.50	20.00	24.00	4.55
1.1/4" X 3/4"		32 X 20	42.70	43.10	27.20	27.60	34.30	35.80	20.20	21.70	6.07	13.50	13.50	25.00	29.00	4.85
1.1/4" X 1"		32 X 25	42.70	43.10	33.90	34.30	34.30	35.80	25.90	27.40	6.07	13.50	13.50	25.00	29.00	4.85
1.1/2" X 1"		40 X 25	48.80	49.20	33.90	34.30	40.10	41.60	25.90	27.40	6.35	13.50	13.50	30.00	34.00	5.08
1.1/2" X 1.1/4"		40 X 32	48.80	49.20	42.70	43.10	40.10	41.60	34.30	35.80	6.35	13.50	13.50	30.00	34.00	5.08
2" X 1.1/4"		50 X 32	61.20	61.70	42.70	43.10	51.70	53.30	34.30	35.80	6.93	16.00	13.50	35.00	40.00	5.54
2" X 1.1/2"		50 X 40	61.20	61.70	48.80	49.20	51.70	53.30	40.10	41.60	6.93	16.00	16.00	36.00	40.00	5.54
2.1/2" X 1.1/2"		65 X 40	73.20	74.40	48.80	49.20	61.20	64.20	40.10	41.60	8.76	16.00	16.00	38.50	43.50	7.01
2.1/2" X 2"		65 X 50	73.20	74.40	61.20	61.70	61.20	64.20	51.70	53.30	8.76	16.00	16.00	38.50	43.5	7.01
3" X 2.1/2"		80 X 65	89.80	90.30	73.90	74.40	76.40	79.40	61.20	64.20	9.52	16.00	16.00	54.5	59.50	7.62
3" X 2"		80 X 50	89.80	90.30	61.20	61.70	76.40	79.40	51.70	53.30	9.52	16.00	16.00	54.50	59.50	7.62

Art No. CPS- 3005

# Socket Weld Socket

Forged 3000 LBS BLACK

Rigidity is the key word for manufacturing 'CPS' fittings for steam hammer. These set the standards of perfection in quality and endurance.



**Class Designation: 3000 Lbs**

**Dimensions 'CPS' As Per ASME B16.11-2011/IS:4712:2011 (Class 20)**

**CREATIVE PIPING SOLUTIONS PRIVATE LIMITED**

[www.creativeforged.com](http://www.creativeforged.com)

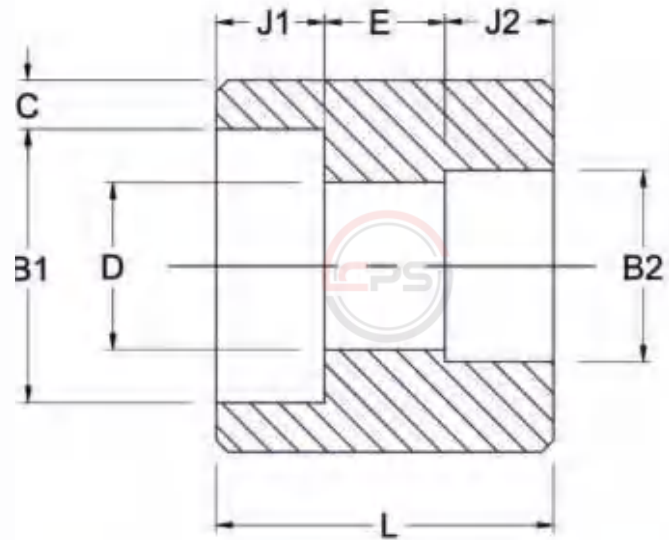
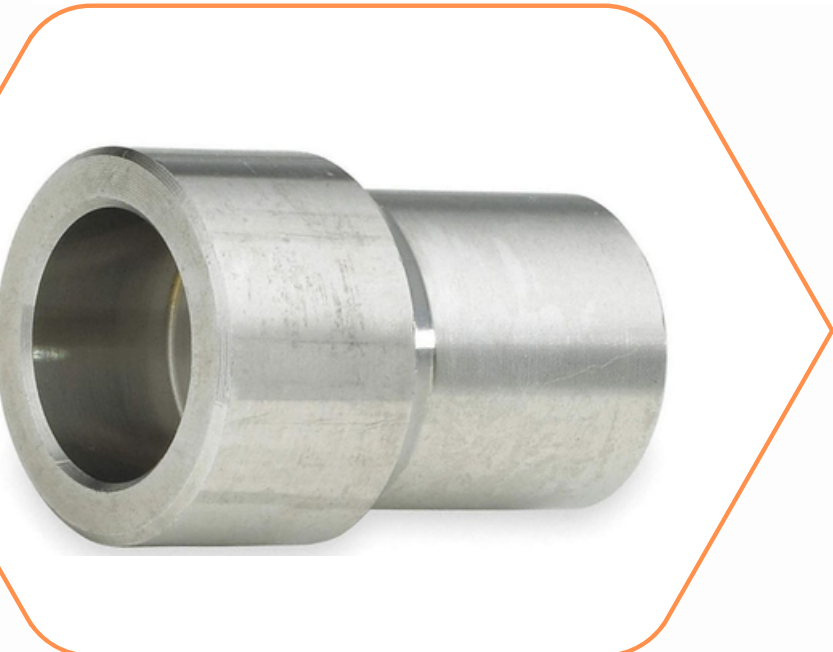
Nominal Size		Socket Bore Dia B		Bore Dia of fitting Dia D		Socket Wall Thickness C	MIN. Depth of Socket J	Laying Length E	
Inch	MM	Min.	Max.	Min.	Max.	Min.	Min.	Min.	Max.
1/8"	6.00	10.80	11.20	6.10	7.60	3.18	10.50	5.00	8.00
1/4"	8.00	14.20	14.60	8.50	10.00	3.30	10.50	5.00	8.00
3/8"	10.00	17.60	18.00	11.80	13.30	3.50	10.50	5.00	9.00
1/2"	15.00	21.80	22.20	15.00	16.60	4.09	10.50	6.50	12.50
3/4"	20.00	27.20	27.60	20.20	21.70	4.27	13.50	6.50	12.50
1"	25.00	33.90	34.30	25.90	27.40	4.98	13.50	8.50	16.50
1 1/4"	32.00	42.70	43.10	34.30	35.80	5.28	13.50	8.50	16.50
1 1/2"	40.00	48.80	49.20	40.10	41.60	5.54	13.50	8.50	16.50
2"	50.00	61.20	61.70	51.70	53.30	6.04	17.00	15.00	23.00
2 1/2"	65.00	73.90	74.40	61.20	64.20	7.67	18.00	15.00	23.00
3"	80.00	89.80	90.30	76.40	79.40	8.30	18.00	15.00	23.00
4"	100.00	115.20	115.70	100.70	103.80	9.35	19.00	15.00	23.00

Art No. CPS- 3006

# Reducing Socket Weld Socket/ Coupling

Forged 3000 LBS BLACK

Manufacturing 'CPS' pipe fittings for the big industries units asks for perfection. Our fittings live up to those standards.




**CREATIVE**  
PIPING SOLUTIONS PVT. LTD  
ISO 9001:2015, 14001:2004, 18001:2007 Certified Company

**Class Designation: 3000 Lbs**      **Dimensions 'CPS' Reducing Socket Weld Socket/ Coupling**

**CREATIVE PIPING SOLUTIONS PRIVATE LIMITED**      ([www.creativeforged.com](http://www.creativeforged.com))

Nominal Size		Socket Bore Dia B1		Socket Bore Dia B2		Bore Dia of Fitting Dia D1		Bore Dia of Fitting Dia D2		Socket Wall Thickness C	Depth of socket (J)		Laying Length E	
Inch	MM	Min.	Max.	Min.	Max.	Min.	Max.	Min.	Max.	Min.	J1	J2	Min.	Max.
1/4" X 1/8"	8 X 6	14.20	14.60	10.8	11.20	8.50	10.00	6.10	7.60	3.78	10.50	10.50	5.00	8.00
3/8" X 1/4"	10 X 8	17.60	18.00	14.20	14.60	11.80	13.30	8.50	10.00	4.01	10.50	10.50	5.00	9.00
1/2" X 3/8"	15 X 10	21.80	22.00	17.60	18.00	15.00	16.60	11.80	13.30	4.67	10.50	10.50	6.00	13.00
3/4" X 1/2"	20 X 15	27.20	27.60	21.80	22.20	20.20	21.70	15.00	16.60	4.90	13.50	10.50	6.00	13.00
1" X 1/2"	25 X 15	33.90	34.30	21.80	22.20	25.90	27.40	15.00	16.60	5.69	13.50	10.50	9.00	17.00
1" X 3/4"	25 X 20	33.90	34.30	27.20	27.60	25.90	27.40	20.20	21.70	5.69	13.50	13.50	9.00	17.00
1.1/4" X 3/4"	32 X 20	42.70	43.10	27.20	27.60	34.30	35.80	20.20	21.70	6.07	13.50	13.50	9.00	17.00
1.1/4" X 1"	32 X 25	42.70	43.10	33.90	34.30	34.30	35.80	25.90	27.40	6.07	13.50	13.50	9.00	17.00
1.1/2" X 1"	40 X 25	48.80	49.20	33.90	34.30	40.10	41.60	25.90	27.40	6.35	13.50	13.50	9.00	17.00
1.1/2" X 1.1/4"	40 X 32	48.80	49.20	42.70	43.10	40.10	41.60	34.30	35.80	6.35	13.50	13.50	9.00	17.00
2" X 1.1/4"	50 X 32	61.20	61.70	42.70	43.10	51.70	53.30	34.30	35.80	6.93	16.00	13.50	15.00	23.00
2" X 1.1/2"	50 X 40	61.20	61.70	48.80	49.20	51.70	53.30	40.10	41.60	6.93	16.00	16.00	15.00	23.00
2.1/2" X 1.1/2"	65 X 40	73.20	74.40	48.80	49.20	61.20	64.20	40.10	41.60	8.76	16.00	16.00	15.00	23.00
2.1/2" X 2"	65 X 50	73.20	74.40	61.20	61.70	61.20	64.20	51.70	53.30	8.76	16.00	16.00	15.00	23.00
3" X 2.1/2"	80 X 65	89.80	90.30	73.90	74.40	76.40	79.40	61.20	64.20	9.52	16.00	16.00	15.00	23.00
3" X 2"	80 X 50	89.80	90.30	61.20	61.70	76.40	79.40	51.70	53.30	9.52	16.00	16.00	15.00	23.00

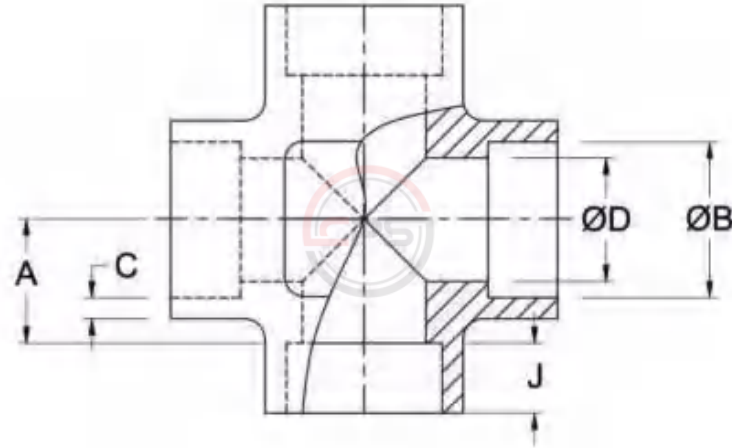
All Dimensions in MM

Art No. CPS- 3007

## Socket Weld Cross

Forged 3000 LBS BLACK

Ship building industries all over India rely on '**CPS**' fittings for pipe line layout in ship building applications.



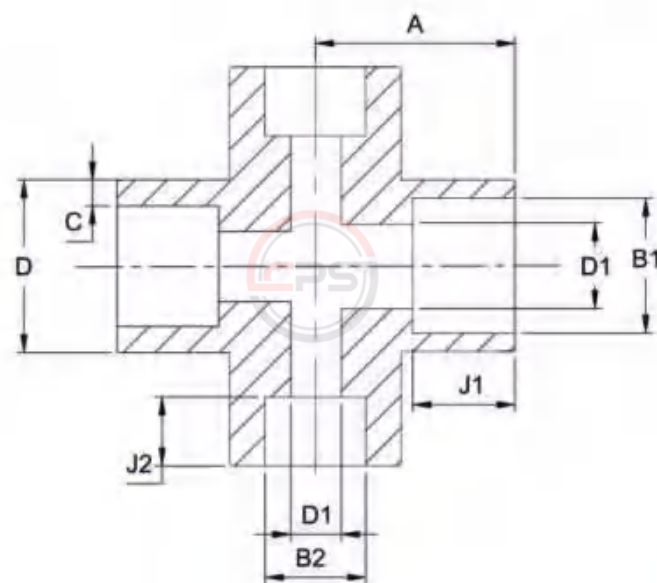
Class Designation: 3000 Lbs			Dimensions 'CPS' As Per ASME B16.11-2011/IS:4712:2011 (Class 20)							
CREATIVE PIPING SOLUTIONS PRIVATE LIMITED							(www.creativeforged.com)			
Nominal Size		Socket Bore Dia B		Bore Dia of fitting Dia D		Socket Wall Thickness C	MIN. Depth of Socket J	Centre Bottom of Socket A		Body Wall Thickness G
Inch	MM	Min.	Max.	Min.	Max.	Min.	Min.	Min.	Max.	Min.
1/8"	6.00	10.80	11.20	6.10	7.60	3.18	10.50	11.00	12.00	2.41
1/4"	8.00	14.20	14.60	8.50	10.00	3.30	10.50	11.00	12.00	3.02
3/8"	10.00	17.60	18.00	11.80	13.30	3.50	10.50	13.50	15.00	3.20
1/2"	15.00	21.80	22.20	15.00	16.60	4.09	10.50	15.50	17.00	3.73
3/4"	20.00	27.20	27.60	20.20	21.70	4.27	13.50	19.00	20.50	3.91
1"	25.00	33.90	34.30	25.90	27.40	4.98	13.50	22.50	24.00	4.55
1.1/4"	32.00	42.70	43.10	34.30	35.80	5.28	13.50	27.00	29.00	4.85
1.1/2"	40.00	48.80	49.20	40.10	41.60	5.54	13.50	32.00	34.00	5.08
2"	50.00	61.20	61.70	51.70	53.30	6.04	17.00	38.00	40.00	5.54
2.1/2"	65.00	73.90	74.40	61.20	64.20	7.67	18.00	42.00	43.50	7.01
3"	80.00	89.80	90.30	76.40	79.40	8.30	18.00	57.00	59.50	7.62
4"	100.00	115.20	115.70	100.70	103.80	9.35	19.00	66.50	68.00	8.56

Art No. CPS- 3008

# Reducing Socket Weld Cross

Forged 3000 LBS BLACK

These 'CPS' fittings are synonymous to precision & they prove in every field of application




**CREATIVE**  
PIPING SOLUTIONS PVT. LTD  
ISO 9001:2015, 14001:2004, 18001:2007 Certified Company

Class Designation: 3000 Lbs

## Dimensions 'CPS' Reducing Socket Weld Cross

**CREATIVE PIPING SOLUTIONS PRIVATE LIMITED**

[www.creativeforged.com](http://www.creativeforged.com)

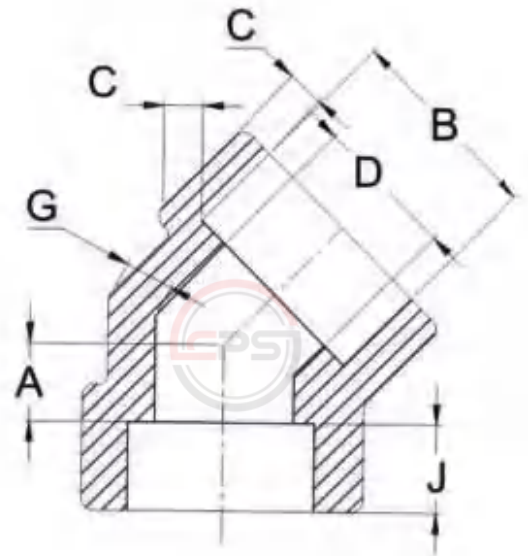
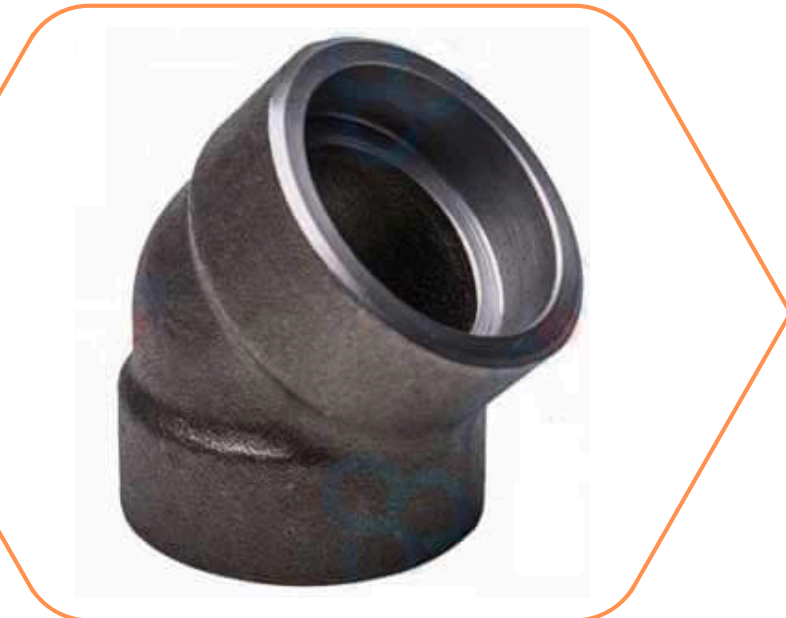
Nominal Size		Socket Bore Dia B1		Socket Bore Dia B2		Bore Dia of Fitting Dia D1		Bore Dia of Fitting Dia D2		Socket Wall Thickness C	Depth of socket (J)		Centre Bottom of socket A		Body Wall Thickness G
Inch	MM	Min.	Max.	Min.	Max.	Min.	Max.	Min.	Max.	Min.	J1	J2	Min.	Max.	Min.
1/4" X 1/8"	8 X 6	14.20	14.60	10.8	11.20	8.50	10.00	6.10	7.60	3.78	10.50	10.50	10.00	12.00	3.02
3/8" X 1/4"	10 X 8	17.60	18.00	14.20	14.60	11.80	13.30	8.50	10.00	4.01	10.50	10.50	12.00	15.00	3.20
1/2" X 3/8"	15 X 10	21.80	22.00	17.60	18.00	15.00	16.60	11.80	13.30	4.67	10.50	10.50	14.00	17.00	3.73
3/4" X 1/2"	20 X 15	27.20	27.60	21.80	22.20	20.20	21.70	15.00	16.60	4.90	13.50	10.50	18.00	21.00	3.91
1" X 1/2"	25 X 15	33.90	34.30	21.80	22.20	25.90	27.40	15.00	16.60	5.69	13.50	10.50	20.00	24.00	4.55
1" X 3/4"	25 X 20	33.90	34.30	27.20	27.60	25.90	27.40	20.20	21.70	5.69	13.50	13.50	20.00	24.00	4.55
1.1/4" X 3/4"	32 X 20	42.70	43.10	27.20	27.60	34.30	35.80	20.20	21.70	6.07	13.50	13.50	25.00	29.00	4.85
1.1/4" X 1"	32 X 25	42.70	43.10	33.90	34.30	34.30	35.80	25.90	27.40	6.07	13.50	13.50	25.00	29.00	4.85
1.1/2" X 1"	40 X 25	48.80	49.20	33.90	34.30	40.10	41.60	25.90	27.40	6.35	13.50	13.50	30.00	34.00	5.08
1.1/2" X 1.1/4"	40 X 32	48.80	49.20	42.70	43.10	40.10	41.60	34.30	35.80	6.35	13.50	13.50	30.00	34.00	5.08
2" X 1.1/4"	50 X 32	61.20	61.70	42.70	43.10	51.70	53.30	34.30	35.80	6.93	16.00	13.50	35.00	40.00	5.54
2" X 1.1/2"	50 X 40	61.20	61.70	48.80	49.20	51.70	53.30	40.10	41.60	6.93	16.00	16.00	36.00	40.00	5.54
2.1/2" X 1.1/2"	65 X 40	73.20	74.40	48.80	49.20	61.20	64.20	40.10	41.60	8.76	16.00	16.00	38.50	43.50	7.01
2.1/2" X 2"	65 X 50	73.20	74.40	61.20	61.70	61.20	64.20	51.70	53.30	8.76	16.00	16.00	38.50	43.5	7.01
3" X 2.1/2"	80 X 65	89.80	90.30	73.90	74.40	76.40	79.40	61.20	64.20	9.52	16.00	16.00	54.5	59.50	7.62
3" X 2"	80 X 50	89.80	90.30	61.20	61.70	76.40	79.40	51.70	53.30	9.52	16.00	16.00	54.50	59.50	7.62

Art No. CPS- 3009

# Socket Weld Elbow 45°

Forged 3000 LBS BLACK

'CPS' fittings are being used in textile industries also. our socket weld elbow is a versatile component on almost every type of pipeline for plugging fluid flow.



**Class Designation: 3000 Lbs**      **Dimensions 'CPS' As Per ASME B16.11-2011/IS:4712:2011 (Class 20)**

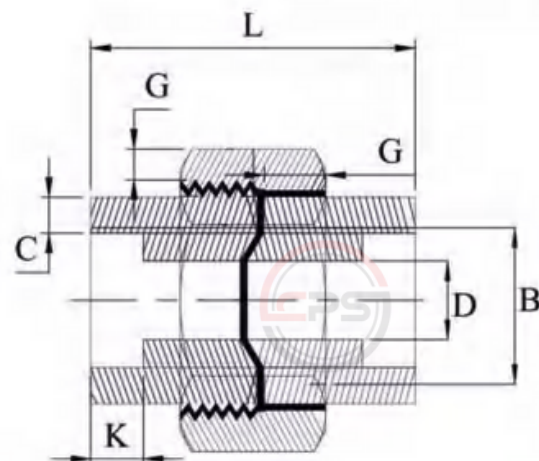
CREATIVE PIPING SOLUTIONS PRIVATE LIMITED							<a href="http://www.creativeforged.com">www.creativeforged.com</a>			
Nominal Size		Socket Bore Dia B		Bore Dia of fitting Dia D		Socket Wall Thickness C	MIN. Depth of Socket J	Centre Bottom of Socket A		Body Wall Thickness G
Inch	MM	Min.	Max.	Min.	Max.	Min.	Min.	Min.	Max.	Min.
1/8"	6.00	10.80	11.20	6.10	7.60	3.18	10.50	8.00	9.00	2.41
1/4"	8.00	14.20	14.60	8.50	10.00	3.30	10.50	8.00	9.00	3.02
3/8"	10.00	17.60	18.00	11.80	13.30	3.50	10.50	8.00	9.50	3.20
1/2"	15.00	21.80	22.20	15.00	16.60	4.09	10.50	11.00	12.50	3.73
3/4"	20.00	27.20	27.60	20.20	21.70	4.27	13.50	13.00	14.50	3.91
1"	25.00	33.90	34.30	25.90	27.40	4.98	13.50	14.00	16.00	4.55
1.1/4"	32.00	42.70	43.10	34.30	35.80	5.28	13.50	17.50	19.50	4.85
1.1/2"	40.00	48.80	49.20	40.10	41.60	5.54	13.50	20.50	22.50	5.08
2"	50.00	61.20	61.70	51.70	53.30	6.04	17.00	25.50	27.50	5.54
2.1/2"	65.00	73.90	74.40	61.20	64.20	7.67	18.00	28.50	31.00	7.01
3"	80.00	89.80	90.30	76.40	79.40	8.30	18.00	32.00	34.50	7.62
4"	100.00	115.20	115.70	100.70	103.80	9.35	19.00	41.00	43.00	8.56

Art No. CPS- 30010

# Socket Weld Union

Forged 3000 LBS BLACK

'CPS' fittings are being used in textile industries also. our socket weld elbow is a versatile component on almost every type of pipeline for plugging fluid flow.



Class Designation: 3000 Lbs

Dimensions 'CPS' As Per ASME B16.11-2011/IS:4712:2011 (Class 20)

CREATIVE PIPING SOLUTIONS PRIVATE LIMITED							<a href="http://www.creativeforged.com">www.creativeforged.com</a>		
Nominal Size		Socket Bore Dia B		Water Way Bore D		Socket Wall Thickness C	Depth of Socket K	Nut G	Length Assem. L
Inch	MM	Min.	Max.	Min.	Max.	Min.	Min.	Min.	Min.
1/4"	8.00	14.10	14.61	8.48	10.01	3.30	9.70	3.18	45.00
3/8"	10.00	17.53	18.03	11.76	13.28	3.51	9.70	3.43	50.00
1/2"	15.00	21.72	22.23	15.04	16.56	4.09	9.70	3.68	50.00
3/4"	20.00	27.05	27.56	20.17	21.69	4.27	12.70	4.06	60.00
1"	25.00	33.78	34.29	25.88	27.41	4.98	12.70	4.45	65.00
1.1/4"	32.00	42.55	43.05	34.29	35.81	5.28	12.70	5.21	75.00
1.1/2"	40.00	48.64	49.15	40.13	41.66	5.54	12.70	4.59	80.00
2"	50.00	61.11	61.62	51.74	63.26	6.05	15.70	6.35	90.00
2.1/2"	65.00	73.81	74.45	61.19	64.24	7.67	15.70	7.11	103.00
3"	80.00	89.78	90.42	76.40	79.45	8.30	15.70	8.00	108.90



**Forged Steel  
High Pressure Socket Weld  
Pipe Fittings 6000 Lbs.**

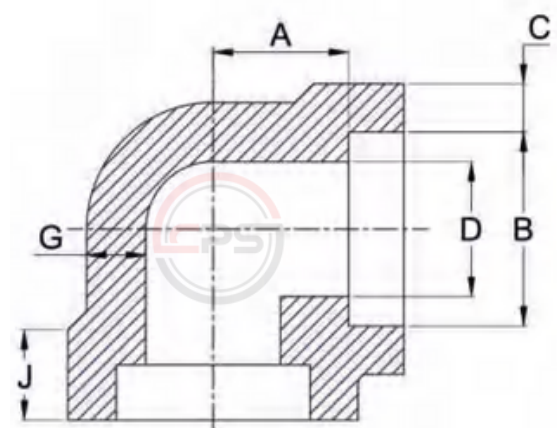


 **+91 - 7045212326**  
 **sales@creativeforged.com**  
 **www.creativeforged.com**



Art No. CPS- 6001  
**Socket Weld Elbow 90°**  
 Forged 6000 LBS BLACK

'CPS' fittings are being used in textile industries also. our socket weld elbow is a versatile component on almost every type of pipeline for plugging fluid flow.




**CREATIVE**  
 PIPING SOLUTIONS PVT. LTD.  
 ISO 9001:2015, 14001:2004, 18001:2007 Certified Company

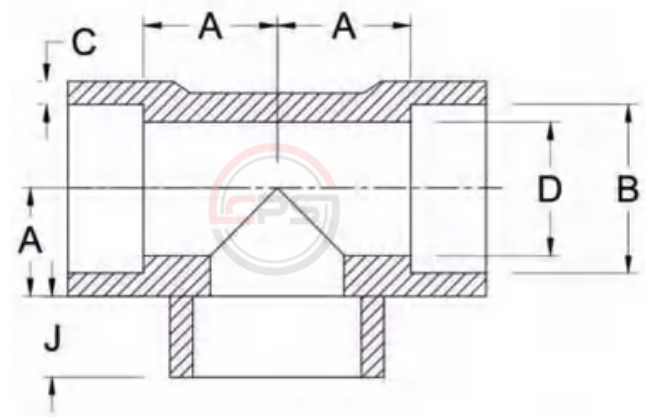
**Class Designation: 6000 Lbs**      **Dimensions 'CPS' As Per ASME B16.11-2011/IS:4712:2011 (Class 40)**

CREATIVE PIPING SOLUTIONS PRIVATE LIMITED							<a href="http://www.creativeforged.com">www.creativeforged.com</a>			
Nominal Size		Socket Bore Dia B		Bore Dia of fitting Dia D		Socket Wall Thickness C	MIN. Depth of Socket J	Centre Bottom of Socket A		Body Wall Thickness G
Inch	MM	Min.	Max.	Min.	Max.	Min.	Min.	Min.	Max.	Min.
1/8"	6.00	10.80	11.20	3.20	4.80	3.43	9.50	11.00	12.00	3.15
1/4"	8.00	14.20	14.60	5.60	7.10	4.01	9.50	13.50	15.00	3.68
3/8"	10.00	17.60	18.00	8.40	9.90	4.37	9.50	15.50	17.00	4.01
1/2"	15.00	21.80	22.20	11.00	12.50	5.18	9.50	19.00	20.50	4.78
3/4"	20.00	27.20	27.60	14.80	16.30	6.04	12.50	22.50	24.50	5.56
1"	25.00	33.90	34.30	19.90	21.50	6.93	12.50	27.00	29.00	6.35
1.1/4"	32.00	42.70	43.10	28.70	30.20	6.93	12.50	32.00	34.00	6.35
1.1/2"	40.00	48.80	49.20	33.20	34.70	7.80	12.50	38.00	40.00	7.14
2"	50.00	61.20	61.70	42.10	43.60	9.50	16.00	41.00	43.50	8.74
2.1/2"	65.00	73.90	74.40	52.45	54.95	11.50	16.00	47.30	51.00	10.61
3"	80.00	89.80	90.30	62.40	65.00	13.20	16.00	66.50	71.10	11.88
4"	100.00	115.20	115.70	80.60	83.50	15.10	19.00	85.50	91.20	13.86

All Dimensions in MM

Art No. CPS- 6002  
**Socket Weld Tee (6000 lbs)**  
 Forged 6000 LBS BLACK

'CPS' fittings are being used in textile industries also. our socket weld tee is a versatile component on almost every type of pipeline for plugging fluid flow.




ISO 9001:2015, 14001:2004, 18001:2007 Certified Company

**Class Designation: 6000 Lbs**      **Dimensions 'CPS' As Per ASME B16.11-2011/IS:4712:2011 (Class 40)**

CREATIVE PIPING SOLUTIONS PRIVATE LIMITED							(www.creativeforged.com)			
Nominal Size		Socket Bore Dia B		Bore Dia of fitting Dia D		Socket Wall Thickness C	MIN. Depth of Socket J	Centre Bottom of Socket A		Body Wall Thickness G
Inch	MM	Min.	Max.	Min.	Max.	Min.	Min.	Min.	Max.	Min.
1/8"	6.00	10.80	11.20	3.20	4.80	3.96	9.50	11.00	12.00	3.15
1/4"	8.00	14.20	14.60	5.60	7.10	4.60	9.50	13.50	15.00	3.68
3/8"	10.00	17.60	18.00	8.40	9.90	5.03	9.50	15.50	17.00	4.01
1/2"	15.00	21.80	22.20	11.00	12.50	5.97	9.50	19.00	20.50	4.78
3/4"	20.00	27.20	27.60	14.80	16.30	6.96	12.50	22.50	24.50	5.56
1"	25.00	33.90	34.30	19.90	21.50	7.92	12.50	27.00	29.00	6.35
1.1/4"	32.00	42.70	43.10	28.70	30.20	7.92	12.50	32.00	34.00	6.35
1.1/2"	40.00	48.80	49.20	33.20	34.70	8.92	12.50	38.00	40.00	7.14
2"	50.00	61.20	61.70	42.10	43.60	10.92	16.00	41.00	43.50	8.74
2.1/2"	65.00	73.90	74.40	52.45	54.95	11.50	16.00	47.30	51.00	10.61
3"	80.00	89.80	90.30	62.40	65.00	13.20	16.00	66.50	71.10	11.88
4"	100.00	115.20	115.70	80.60	83.50	15.10	19.00	85.50	91.20	13.86

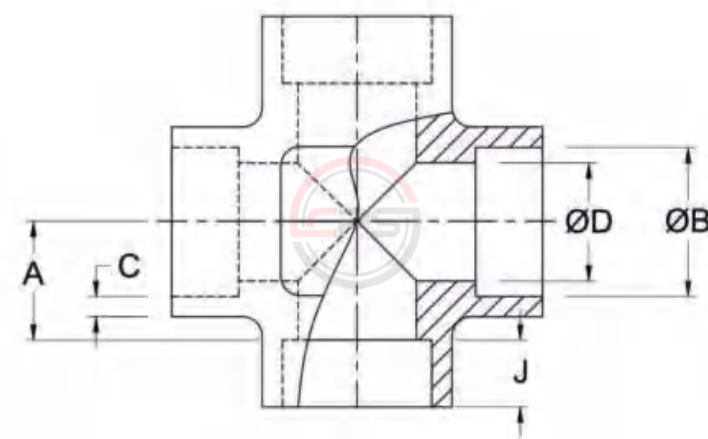
All Dimensions in MM

Art No. CPS- 6003

# Socket Weld Cross (6000 lbs)

Forged 6000 LBS BLACK

Ship building industries all over India rely on 'CPS' fittings for pipe line layout in ship building applications.



ISO 9001:2015, 14001:2004, 18001:2007 Certified Company

**Class Designation: 6000 Lbs**

**Dimensions 'CPS' As Per ASME B16.11-2011/IS:4712:2011 (Class 40)**

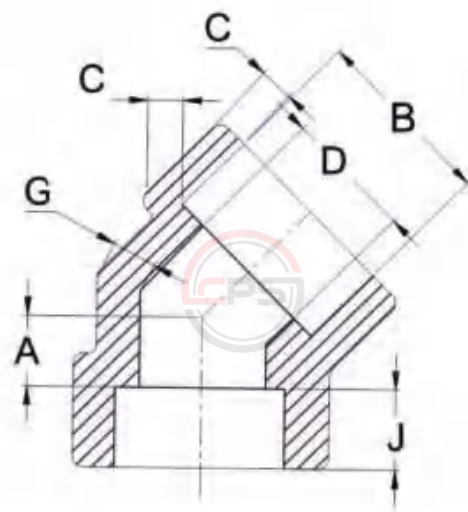
CREATIVE PIPING SOLUTIONS PRIVATE LIMITED							(www.creativeforged.com)			
Nominal Size		Socket Bore Dia B		Bore Dia of fitting Dia D		Socket Wall Thickness C	MIN. Depth of Socket J	Centre Bottom of Socket A		Body Wall Thickness G
Inch	MM	Min.	Max.	Min.	Max.	Min.	Min.	Min.	Max.	Min.
1/8"	6.00	10.80	11.20	3.20	4.80	3.96	9.50	11.00	12.00	3.15
1/4"	8.00	14.20	14.60	5.60	7.10	4.60	9.50	13.50	15.00	3.68
3/8"	10.00	17.60	18.00	8.40	9.90	5.03	9.50	15.50	17.00	4.01
1/2"	15.00	21.80	22.20	11.00	12.50	5.97	9.50	19.00	20.50	4.78
3/4"	20.00	27.20	27.60	14.80	16.30	6.96	12.50	22.50	24.50	5.56
1"	25.00	33.90	34.30	19.90	21.50	7.92	12.50	27.00	29.00	6.35
1.1/4"	32.00	42.70	43.10	28.70	30.20	7.92	12.50	32.00	34.00	6.35
1.1/2"	40.00	48.80	49.20	33.20	34.70	8.92	12.50	38.00	40.00	7.14
2"	50.00	61.20	61.70	42.10	43.60	10.92	16.00	41.00	43.50	8.74
2.1/2"	65.00	73.90	74.40	52.45	54.95	11.50	16.00	47.30	51.00	10.61
3"	80.00	89.80	90.30	62.40	65.00	13.20	16.00	66.50	71.10	11.88
4"	100.00	115.20	115.70	80.60	83.50	15.10	19.00	85.50	91.20	13.86

Art No. CPS- 6004

# Socket Weld Elbow 45° (6000 lbs)

Forged 6000 LBS BLACK

'CPS' fittings are being used in textile industries also. our socket weld elbow is a versatile component on almost every type of pipeline for plugging fluid flow.



**Class Designation: 6000 Lbs**      **Dimensions 'CPS' As Per ASME B16.11-2011/IS:4712:2011 (Class 40)**

CREATIVE PIPING SOLUTIONS PRIVATE LIMITED							(www.creativeforged.com)			
Nominal Size		Socket Bore Dia B		Bore Dia of fitting Dia D		Socket Wall Thickness C	MIN. Depth of Socket J	Centre Bottom of Socket A		Body Wall Thickness G
Inch	MM	Min.	Max.	Min.	Max.	Min.	Min.	Min.	Max.	Min.
1/8"	6.00	10.80	11.20	3.20	4.80	3.96	10.50	7.00	9.00	3.15
1/4"	8.00	14.20	14.60	5.60	7.10	4.60	10.50	7.00	9.00	3.68
3/8"	10.00	17.60	18.00	8.40	9.90	5.03	10.50	9.50	12.50	4.01
1/2"	15.00	21.80	22.20	11.00	12.50	5.97	10.50	11.00	14.00	4.78
3/4"	20.00	27.20	27.60	14.80	16.30	6.96	13.50	12.50	15.50	5.56
1"	25.00	33.90	34.30	19.90	21.50	7.92	13.50	15.50	19.50	6.35
1.1/4"	32.00	42.70	43.10	28.70	30.20	7.92	13.50	18.50	22.50	6.35
1.1/2"	40.00	48.80	49.20	33.20	34.70	8.92	13.50	23.50	27.50	7.14
2"	50.00	61.20	61.70	42.10	43.60	10.92	17.00	26.50	30.50	8.74
2.1/2"	65.00	73.90	74.40	52.45	54.95	11.50	17.00	47.30	51.00	10.61
3"	80.00	89.80	90.30	62.40	65.00	13.20	17.00	54.50	58.20	11.88

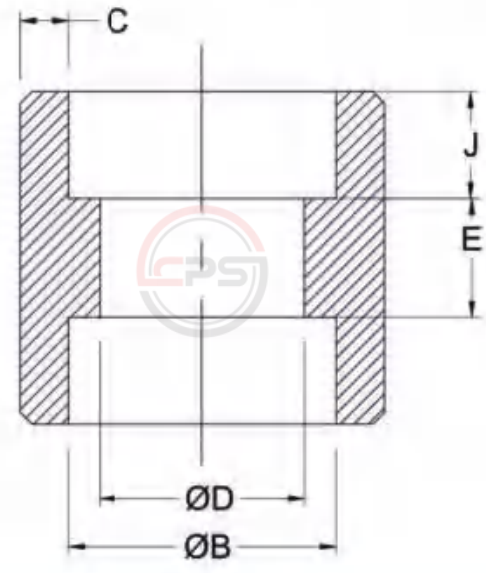
All Dimensions in MM

Art No. CPS- 6005

# Socket Weld Elbow 45 DEG. (6000 lbs)

Forged 6000 LBS BLACK

'CPS' fittings are being used in textile industries also. Our socket weld socket/coupling is a versatile component on almost every type of pipeline for plugging fluid flow.



## CREATIVE

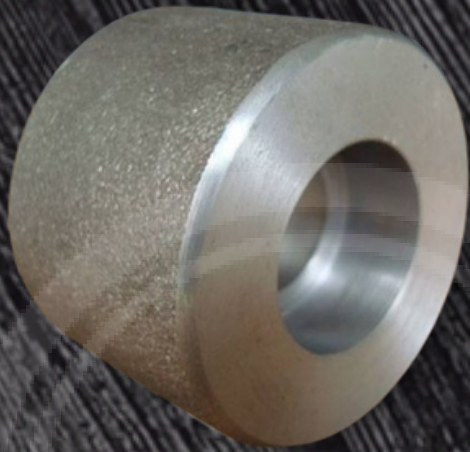
PIPING SOLUTIONS PVT. LTD

ISO 9001:2015, 14001:2004, 18001:2007 Certified Company

**Class Designation: 6000 Lbs**      **Dimensions 'CPS' As Per ASME B16.11-2011/IS:4712:2011 (Class 40)**

**CREATIVE PIPING SOLUTIONS PRIVATE LIMITED**      ([www.creativeforged.com](http://www.creativeforged.com))

Nominal Size		Socket Bore Dia B		Bore Dia of fitting Dia D		Socket Wall Thickness C	MIN. Depth of Socket J	Laying Length E	
Inch	MM	Min.	Max.	Min.	Max.	Min.	Min.	Min.	Max.
1/8"	6.00	10.80	11.20	3.20	4.80	3.96	10.50	5.00	8.00
1/4"	8.00	14.20	14.60	5.60	7.10	4.60	10.50	5.00	8.00
3/8"	10.00	17.60	18.00	8.40	9.90	4.03	10.50	5.00	9.00
1/2"	15.00	21.80	22.20	11.00	12.50	5.97	10.50	6.50	12.50
3/4"	20.00	27.20	27.60	14.80	16.30	6.96	13.50	6.50	12.50
1"	25.00	33.90	34.30	19.90	21.50	7.92	13.50	8.50	16.50
1.1/4"	32.00	42.70	43.10	28.70	30.20	7.92	13.50	8.50	16.50
1.1/2"	40.00	48.80	49.20	33.20	34.70	8.92	13.50	8.50	16.50
2"	50.00	61.20	61.70	42.10	43.60	10.92	17.00	15.00	23.00
2.1/2"	65.00	73.90	74.40	52.45	57.95	11.50	18.00	15.00	24.00
3"	80.00	89.80	90.30	62.40	65.00	13.20	18.00	15.00	24.00
4"	100.00	115.20	115.70	80.60	83.50	15.10	19.00	15.00	24.00



**Forged Steel  
High Pressure Socket Weld  
Pipe Fittings 9000 Lbs.**



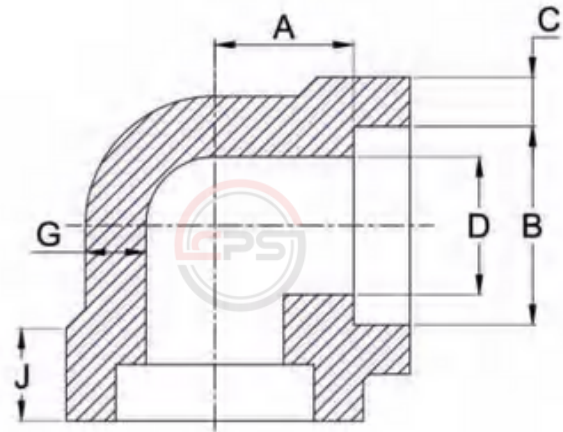
 +91 - 7045212326  
 [sales@creativeforged.com](mailto:sales@creativeforged.com)  
 [www.creativeforged.com](http://www.creativeforged.com)

Art No. CPS- 9001

# Socket Weld Elbow 90° (9000 lbs)

Forged 9000 LBS BLACK

'CPS' fittings are being used in textile industries also. Our socket weld elbow is a versatile component on almost every type of pipeline for plugging fluid flow.



**Class Designation: 9000 Lbs**

**Dimensions 'CPS' As Per ASME B16.11-2011**

CREATIVE PIPING SOLUTIONS PRIVATE LIMITED							(www.creativeforged.com)			
Nominal Size		Socket Bore Dia B		Bore Dia of fitting Dia D		Socket Wall Thickness C	MIN. Depth of Socket J	Centre Bottom of Socket A		Body Wall Thickness G
Inch	MM	Min.	Max.	Min.	Max.	Min.	Min.	Min.	Max.	Min.
1/2"	15.00	21.80	22.20	5.60	7.20	8.18	10.50	25.50	27.00	7.47
3/4"	20.00	27.20	27.60	10.30	11.80	8.56	13.50	28.50	30.00	7.82
1"	25.00	33.90	34.30	14.40	16.00	9.96	13.50	32.00	34.00	9.09
1.1/4"	32.00	42.70	43.10	22.00	23.50	10.62	13.50	35.00	37.00	9.70
1.1/2"	40.00	48.80	49.20	27.20	28.70	11.12	13.50	38.00	40.00	10.15
2"	50.00	61.20	61.70	37.40	38.90	12.12	17.00	54.00	56.00	11.07

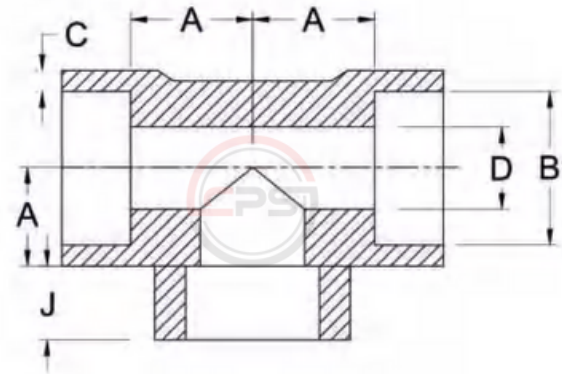
All Dimensions in MM

Art No. CPS- 9002

## Socket Weld Tee (9000 lbs)

Forged 9000 LBS BLACK

'CPS' fittings are being used in textile industries also. our socket weld tee is a versatile component on almost every type of pipeline for plugging fluid flow.



Class Designation: 9000 Lbs				Dimensions 'CPS' As Per ASME B16.11-2011						
CREATIVE PIPING SOLUTIONS PRIVATE LIMITED							(www.creativeforged.com)			
Nominal Size		Socket Bore Dia B		Bore Dia of fitting Dia D		Socket Wall Thickness C	MIN. Depth of Socket J	Centre Bottom of Socket A		Body Wall Thickness G
Inch	MM	Min.	Max.	Min.	Max.	Min.	Min.	Min.	Max.	Min.
1/2"	15.00	21.80	22.20	5.60	7.20	8.18	10.50	25.50	27.00	7.47
3/4"	20.00	27.20	27.60	10.30	11.80	8.56	13.50	28.50	30.00	7.82
1"	25.00	33.90	34.30	14.40	16.00	9.96	13.50	32.00	34.00	9.09
1.1/4"	32.00	42.70	43.10	22.00	23.50	10.62	13.50	35.00	37.00	9.70
1.1/2"	40.00	48.80	49.20	27.20	28.70	11.12	13.50	38.00	40.00	10.15
2"	50.00	61.20	61.70	37.40	38.90	12.12	17.00	54.00	56.00	11.07

All Dimensions in MM

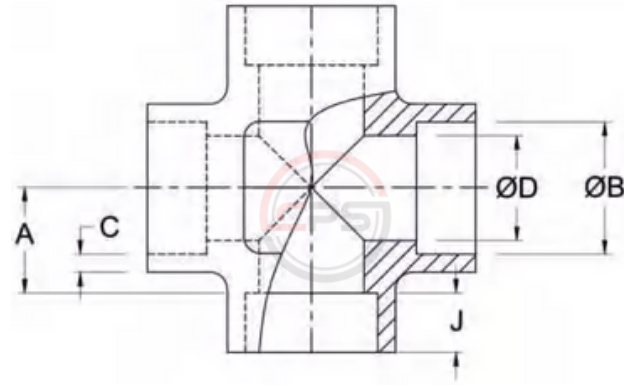


Art No. CPS- 9003

## Socket Weld Cross (9000 lbs)

Forged 9000 LBS BLACK

Ship building industries all over India rely on '**CPS**' fittings for pipe line layout in ship building applications.



**Class Designation: 9000 Lbs**

**Dimensions 'CPS' As Per ASME B16.11-2011**

CREATIVE PIPING SOLUTIONS PRIVATE LIMITED							(www.creativeforged.com)			
Nominal Size		Socket Bore Dia B		Bore Dia of fitting Dia D		Socket Wall Thickness C	MIN. Depth of Socket J	Centre Bottom of Socket A		Body Wall Thickness G
Inch	MM	Min.	Max.	Min.	Max.	Min.	Min.	Min.	Max.	Min.
1/2"	15.00	21.80	22.20	5.60	7.20	8.18	10.50	25.50	27.00	7.47
3/4"	20.00	27.20	27.60	10.30	11.80	8.56	13.50	28.50	30.00	7.82
1"	25.00	33.90	34.30	14.40	16.00	9.96	13.50	32.00	34.00	9.09
1.1/4"	32.00	42.70	43.10	22.00	23.50	10.62	13.50	35.00	37.00	9.70
1.1/2"	40.00	48.80	49.20	27.20	28.70	11.12	13.50	38.00	40.00	10.15
2"	50.00	61.20	61.70	37.40	38.90	12.12	17.00	54.00	56.00	11.07

All Dimensions in MM

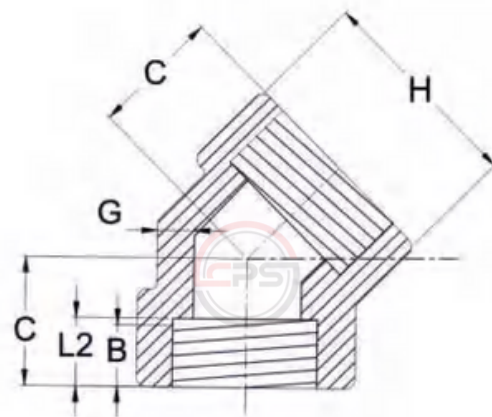
Art No. CPS- 9004

# Socket Weld Elbow 45° (9000 lbs)

Forged 9000 LBS BLACK

'CPS' fittings are being used in textile industries also.

our socket weld elbow is a versatile component on almost every type of pipeline for plugging fluid flow.



**Class Designation: 9000 Lbs**

**Dimensions 'CPS' As Per ASME B16.11-2011**

CREATIVE PIPING SOLUTIONS PRIVATE LIMITED							(www.creativeforged.com)			
Nominal Size		Socket Bore Dia B		Bore Dia of fitting Dia D		Socket Wall Thickness C	MIN. Depth of Socket J	Centre Bottom of Socket A		Body Wall Thickness G
Inch	MM	Min.	Max.	Min.	Max.	Min.	Min.	Min.	Max.	Min.
1/2"	15.00	21.80	22.20	5.60	7.20	8.18	10.50	25.50	27.00	7.47
3/4"	20.00	27.20	27.60	10.30	11.80	8.56	13.50	28.50	30.00	7.82
1"	25.00	33.90	34.30	14.40	16.00	9.96	13.50	32.00	34.00	9.09
1.1/4"	32.00	42.70	43.10	22.00	23.50	10.62	13.50	35.00	37.00	9.70
1.1/2"	40.00	48.80	49.20	27.20	28.70	11.12	13.50	38.00	40.00	10.15
2"	50.00	61.20	61.70	37.40	38.90	12.12	17.00	54.00	56.00	11.07

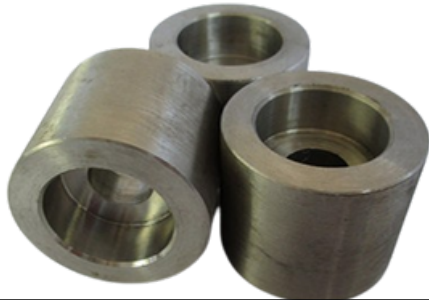
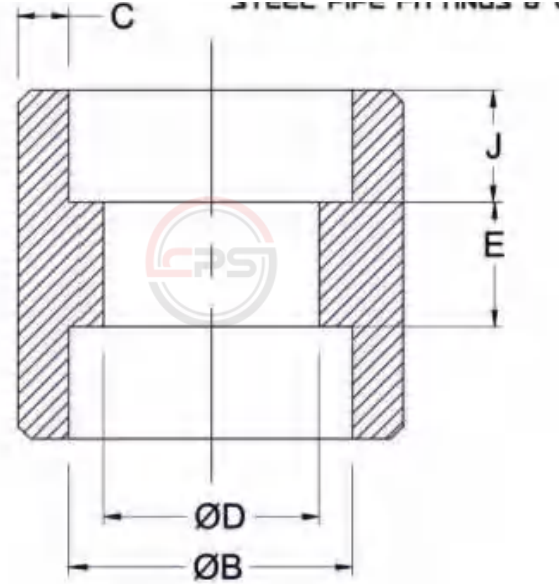
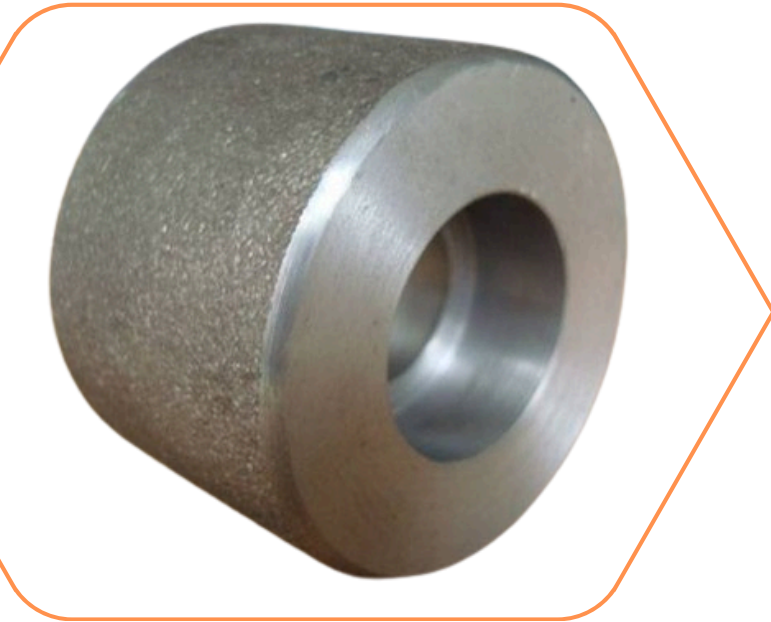
All Dimensions in MM

Art No. CPS- 9005

# Socket Weld Socket/ Coupling (9000 lbs)

Forged 9000 LBS BLACK

Rigidity is the key word for manufacturing 'CPS' fittings for steam hammer. These set the standards of perfection in quality and endurance.




CREATIVE PIPING SOLUTIONS PVT. LTD.  
 ISO 9001:2015, 14001:2004, 18001:2007 Certified Company

**Class Designation: 9000 Lbs**

**Dimensions 'CPS' As Per ASME B16.11-2011**

CREATIVE PIPING SOLUTIONS PRIVATE LIMITED							<a href="http://www.creativeforged.com">www.creativeforged.com</a>		
Nominal Size		Socket Bore Dia B		Bore Dia of fitting Dia D		Socket Wall Thickness C	Depth of Socket J	Nut G	Laying Length E
Inch	MM	Min.	Max.	Min.	Max.	Min.	Min.	Min.	Min.
1/2"	15.00	21.80	22.20	5.60	7.20	8.18	10.50	6.50	12.50
3/4"	20.00	27.20	27.60	10.30	11.80	8.56	13.50	6.50	12.50
1"	25.00	33.90	34.30	14.40	16.00	9.96	13.50	8.50	16.50
1.1/4"	32.00	42.70	43.10	22.00	23.50	10.62	13.50	8.50	16.50
1.1/2"	40.00	48.80	49.20	27.20	28.70	11.12	13.50	8.50	16.50
2"	50.00	61.20	61.70	37.40	38.90	12.12	17.00	15.00	23.00



**Forged Steel  
High Pressure Pipe Fittings  
with Threaded End Connection  
2000 Lbs, 3000 Lbs, 6000 Lbs.**

 **+91 - 7045212326**  
 **sales@creativeforged.com**  
 **www.creativeforged.com**

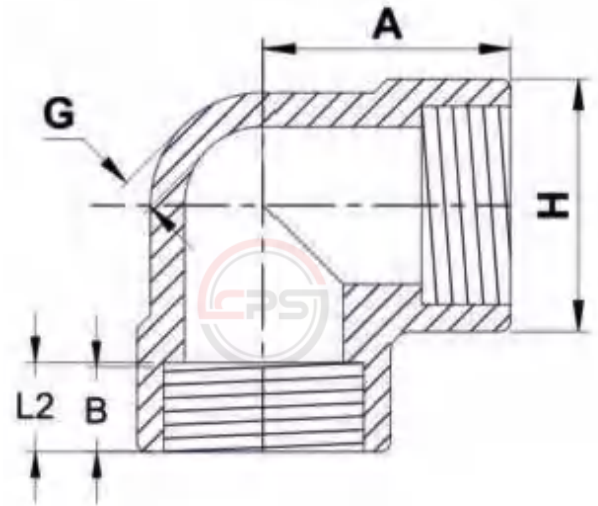


Art No. CPS- 2001

# Threaded Elbow 90°

Forged 2000 LBS BLACK

'CPS' fittings are being used in textile industries also. our threaded Elbow is a versatile component on almost every type of pipeline for plugging fluid flow.



**Class Designation: 2000 Lbs**

**Standard Reference: ASME B.16.11-2011**

**CREATIVE PIPING SOLUTIONS PRIVATE LIMITED** ([www.creativeforged.com](http://www.creativeforged.com))

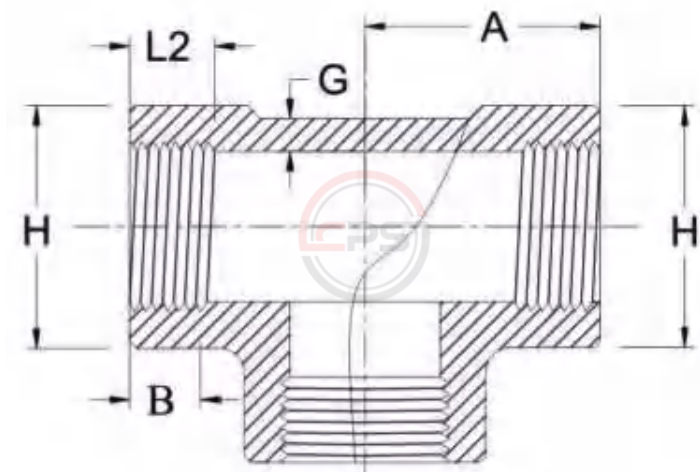
Nominal Size		Centre To End A	Outside DIA H	Min. Wall Thickness G	Min. Length of THD	
Inch	MM	Min.	Min.	Min.	B	L2
1/8"	6.00	21.00	22.00	3.18	6.40	6.70
1/4"	8.00	21.00	22.00	3.18	8.10	10.20
3/8"	10.00	25.00	25.00	3.18	9.10	10.40
1/2"	15.00	28.00	33.00	3.18	10.90	13.60
3/4"	20.00	33.00	38.00	3.18	12.70	13.90
1"	25.00	38.00	46.00	3.68	14.70	17.30
1.1/4"	32.00	44.00	56.00	3.89	17.00	18.00
1.1/2"	40.00	51.00	62.00	4.01	17.80	18.40
2"	50.00	60.00	75.00	4.27	19.00	19.20
2.1/2"	65.00	76.00	92.00	5.61	23.60	28.90
3"	80.00	86.00	109.00	5.99	25.90	30.50
4"	100.00	106.00	146.00	6.55	27.70	33.00

Art No. CPS- 2002

## Threaded Tee (2000 lbs)

Forged 2000 LBS BLACK

'CPS' fittings are being used in textile industries also. our threaded tee is a versatile component on almost every type of pipeline for plugging fluid flow.




CREATIVE PIPING SOLUTIONS PVT. LTD.  
 ISO 9001:2015, 14001:2004, 18001:2007 Certified Company

**Class Designation: 2000 Lbs**      **Standard Reference: ASME B.16.11-2011**

**CREATIVE PIPING SOLUTIONS PRIVATE LIMITED**      ([www.creativeforged.com](http://www.creativeforged.com))

Nominal Size		Centre To End A	Outside DIA H	Min. Wall Thickness G	Min. Length of THD	
Inch	MM	Min.	Min.	Min.	B	L2
1/8"	6.00	21.00	22.00	3.18	6.40	6.70
1/4"	8.00	21.00	22.00	3.18	8.10	10.20
3/8"	10.00	25.00	25.00	3.18	9.10	10.40
1/2"	15.00	28.00	33.00	3.18	10.90	13.60
3/4"	20.00	33.00	38.00	3.18	12.70	13.90
1"	25.00	38.00	46.00	3.68	14.70	17.30
1.1/4"	32.00	44.00	56.00	3.89	17.00	18.00
1.1/2"	40.00	51.00	62.00	4.01	17.80	18.40
2"	50.00	60.00	75.00	4.27	19.00	19.20
2.1/2"	65.00	76.00	92.00	5.61	23.60	28.90
3"	80.00	86.00	109.00	5.99	25.90	30.50
4"	100.00	106.00	146.00	6.55	27.70	33.00

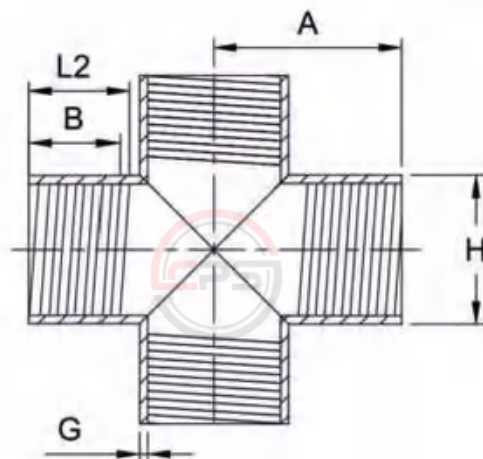
All Dimensions in MM

Art No. CPS- 2003

## Threaded Cross (2000 lbs)

Forged 2000 LBS BLACK

'CPS' fittings are being used in textile industries also. our threaded Cross is a versatile component on almost every type of pipeline for plugging fluid flow.



**CREATIVE**  
PIPING SOLUTIONS PVT. LTD  
ISO 9001:2015, 14001:2004, 18001:2007 Certified Company

Class Designation: 2000 Lbs

Standard Reference: ASME B.16.11-2011

**CREATIVE PIPING SOLUTIONS PRIVATE LIMITED** ([www.creativeforged.com](http://www.creativeforged.com))

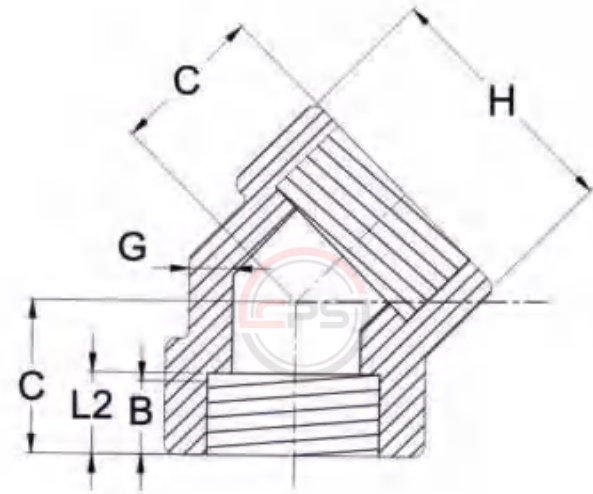
Nominal Size		Centre To End A	Outside DIA H	Min. Wall Thickness G	Min. Length of THD	
Inch	MM	Min.	Min.	Min.	B	L2
1/8"	6.00	21.00	22.00	3.18	6.40	6.70
1/4"	8.00	21.00	22.00	3.18	8.10	10.20
3/8"	10.00	25.00	25.00	3.18	9.10	10.40
1/2"	15.00	28.00	33.00	3.18	10.90	13.60
3/4"	20.00	33.00	38.00	3.18	12.70	13.90
1"	25.00	38.00	46.00	3.68	14.70	17.30
1.1/4"	32.00	44.00	56.00	3.89	17.00	18.00
1.1/2"	40.00	51.00	62.00	4.01	17.80	18.40
2"	50.00	60.00	75.00	4.27	19.00	19.20
2.1/2"	65.00	76.00	92.00	5.61	23.60	28.90
3"	80.00	86.00	109.00	5.99	25.90	30.50
4"	100.00	106.00	146.00	6.55	27.70	33.00

Art No. CPS- 2004

# Threaded Elbow 45°

Forged 2000 LBS BLACK

'CPS' fittings are being used in textile industries also. our threaded Elbow is a versatile component on almost every type of pipeline for plugging fluid flow.



**Class Designation: 2000 Lbs**      **CPS Standard Reference: ASME B.16.11-2011**

**CREATIVE PIPING SOLUTIONS PRIVATE LIMITED**      ([www.creativeforged.com](http://www.creativeforged.com))

Nominal Size		Centre To End C	Outside DIA H	Min. Wall Thickness G	Min. Length of THD	
Inch	MM	Min.	Min.	Min.	B	L2
1/8"	6.00	17.00	22.00	3.18	6.40	6.70
1/4"	8.00	19.00	22.00	3.18	8.10	10.20
3/8"	10.00	22.00	25.00	3.18	9.10	10.40
1/2"	15.00	25.00	33.00	3.18	10.90	13.60
3/4"	20.00	28.00	38.00	3.18	12.70	13.90
1"	25.00	33.00	46.00	3.68	14.70	17.30
1.1/4"	32.00	35.00	56.00	3.89	17.00	18.00
1.1/2"	40.00	43.00	62.00	4.01	17.80	18.40
2"	50.00	44.00	75.00	4.27	19.00	19.20
2.1/2"	65.00	52.00	92.00	5.61	23.60	28.90
3"	80.00	64.00	109.00	5.99	25.90	30.50
4"	100.00	79.00	146.00	5.99	27.70	33.00

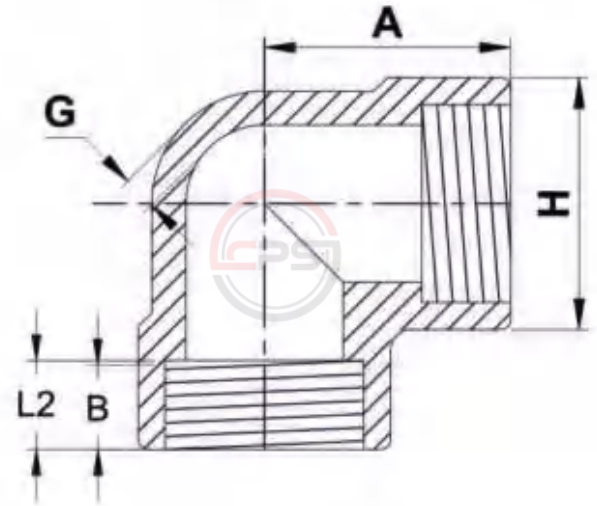


Art No. CPS- 3101

## Threaded Elbow 90°

Forged 3000 LBS BLACK

'CPS' fittings are being used in textile industries also. our threaded Elbow is a versatile component on almost every type of pipeline for plugging fluid flow.




**CREATIVE**  
PIPING SOLUTIONS PVT. LTD  
ISO 9001:2015, 14001:2004, 18001:2007 Certified Company

**Class Designation: 3000 Lbs**      **CPS Standard Reference: ASME B.16.11-2011**

**CREATIVE PIPING SOLUTIONS PRIVATE LIMITED**      ([www.creativeforged.com](http://www.creativeforged.com))

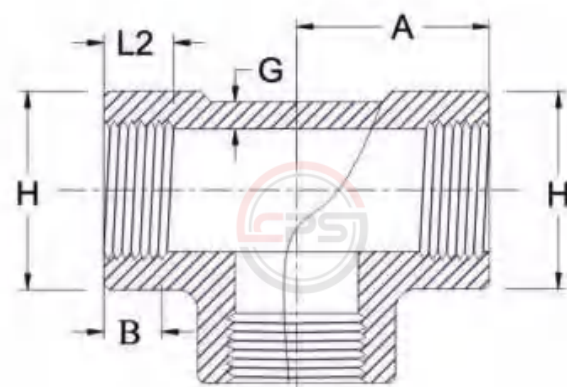
Nominal Size		Centre To End A	Outside DIA H	Min. Wall Thickness G	Min. Length of THD	
Inch	MM	Min.	Min.	Min.	B	L2
1/8"	6.00	21.00	22.00	3.18	6.40	6.70
1/4"	8.00	25.00	25.00	3.330	8.10	10.20
3/8"	10.00	28.00	33.00	3.51	9.10	10.40
1/2"	15.00	33.00	38.00	4.09	10.90	13.60
3/4"	20.00	38.00	46.00	4.32	12.70	13.90
1"	25.00	44.00	56.00	4.98	14.70	17.30
1.1/4"	32.00	51.00	62.00	5.28	17.00	18.00
1.1/2"	40.00	60.00	75.00	5.56	17.80	18.40
2"	50.00	64.00	84.00	7.14	19.00	19.20
2.1/2"	65.00	83.00	102.00	7.65	23.60	28.90
3"	80.00	95.00	121.00	8.84	25.90	30.50
4"	100.00	114.00	152.00	11.18	27.70	33.00

Art No. CPS- 3102

## Threaded Tee

Forged 3000 LBS BLACK

'CPS' fittings are being used in textile industries also. our threaded Tee is a versatile component on almost every type of pipeline for plugging fluid flow.



**Class Designation: 3000 Lbs**      **CPS Standard Reference: ASME B.16.11-2011**

**CREATIVE PIPING SOLUTIONS PRIVATE LIMITED**      ([www.creativeforged.com](http://www.creativeforged.com))

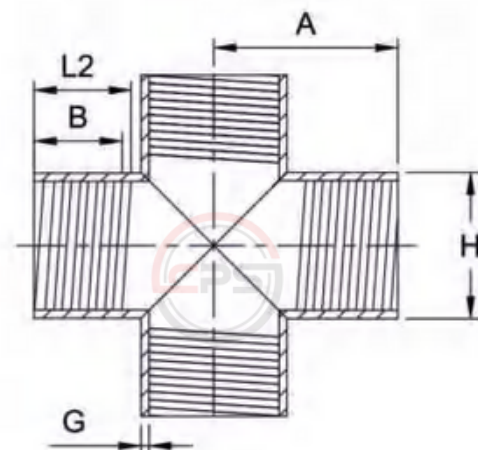
Nominal Size		Centre To End A	Outside DIA H	Min. Wall Thickness G	Min. Length of THD	
Inch	MM	Min.	Min.	Min.	B	L2
1/8"	6.00	21.00	22.00	3.18	6.40	6.70
1/4"	8.00	25.00	25.00	3.330	8.10	10.20
3/8"	10.00	28.00	33.00	3.51	9.10	10.40
1/2"	15.00	33.00	38.00	4.09	10.90	13.60
3/4"	20.00	38.00	46.00	4.32	12.70	13.90
1"	25.00	44.00	56.00	4.98	14.70	17.30
1.1/4"	32.00	51.00	62.00	5.28	17.00	18.00
1.1/2"	40.00	60.00	75.00	5.56	17.80	18.40
2"	50.00	64.00	84.00	7.14	19.00	19.20
2.1/2"	65.00	83.00	102.00	7.65	23.60	28.90
3"	80.00	95.00	121.00	8.84	25.90	30.50
4"	100.00	114.00	152.00	11.18	27.70	33.00

Art No. CPS- 3103

## Threaded Cross

Forged 3000 LBS BLACK

'CPS' fittings are being used in textile industries also. our threaded Cross is a versatile component on almost every type of pipeline for plugging fluid flow.



**Class Designation: 3000 Lbs**      **CPS Standard Reference: ASME B.16.11-2011**

**CREATIVE PIPING SOLUTIONS PRIVATE LIMITED**      ([www.creativeforged.com](http://www.creativeforged.com))

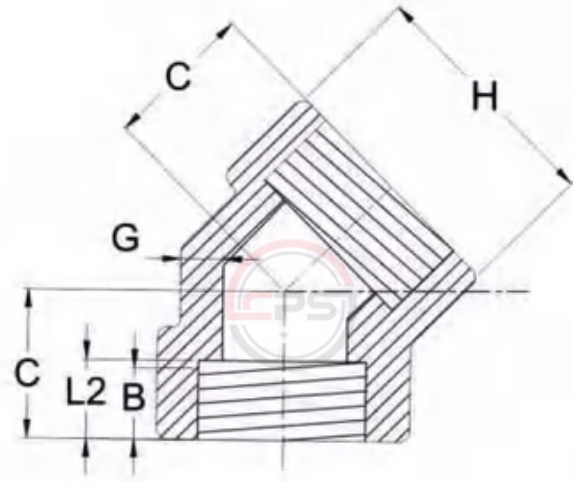
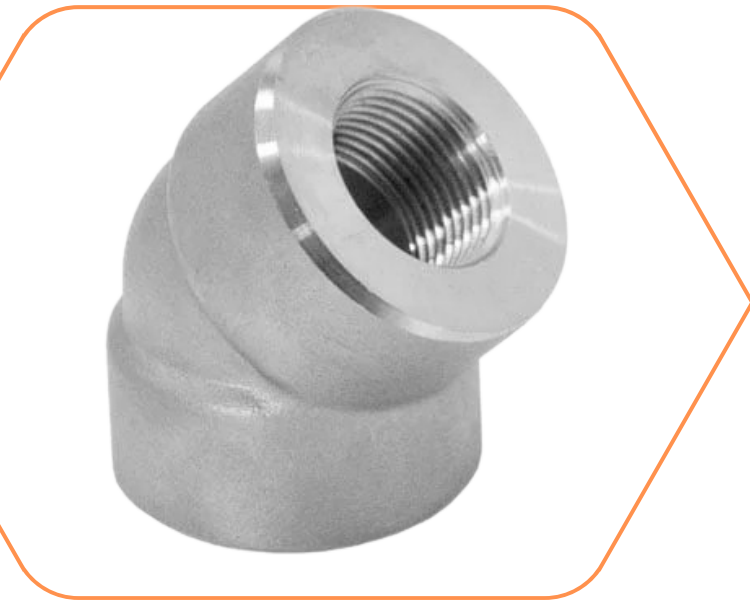
Nominal Size		Centre To End A	Outside DIA H	Min. Wall Thickness G	Min. Length of THD	
Inch	MM	Min.	Min.	Min.	B	L2
1/8"	6.00	21.00	22.00	3.18	6.40	6.70
1/4"	8.00	25.00	25.00	3.330	8.10	10.20
3/8"	10.00	28.00	33.00	3.51	9.10	10.40
1/2"	15.00	33.00	38.00	4.09	10.90	13.60
3/4"	20.00	38.00	46.00	4.32	12.70	13.90
1"	25.00	44.00	56.00	4.98	14.70	17.30
1.1/4"	32.00	51.00	62.00	5.28	17.00	18.00
1.1/2"	40.00	60.00	75.00	5.56	17.80	18.40
2"	50.00	64.00	84.00	7.14	19.00	19.20
2.1/2"	65.00	83.00	102.00	7.65	23.60	28.90
3"	80.00	95.00	121.00	8.84	25.90	30.50
4"	100.00	114.00	152.00	11.18	27.70	33.00

Art No. CPS- 3104

## Threaded Elbow 90°

Forged 3000 LBS BLACK

'CPS' fittings are being used in textile industries also. our threaded Elbow is a versatile component on almost every type of pipeline for plugging fluid flow.



**Class Designation: 3000 Lbs**

**CPS Standard Reference: ASME B.16.11-2011**

**CREATIVE PIPING SOLUTIONS PRIVATE LIMITED**

[www.creativeforged.com](http://www.creativeforged.com)

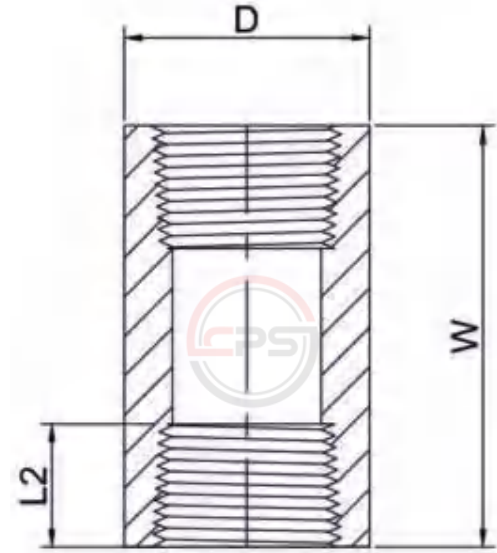
Nominal Size		Centre To End C	Outside DIA H	Min. Wall Thickness G	Min. Length of THD	
Inch	MM	Min.	Min.	Min.	B	L2
1/8"	6.00	21.00	22.00	3.18	6.40	6.70
1/4"	8.00	25.00	25.00	3.330	8.10	10.20
3/8"	10.00	28.00	33.00	3.51	9.10	10.40
1/2"	15.00	33.00	38.00	4.09	10.90	13.60
3/4"	20.00	38.00	46.00	4.32	12.70	13.90
1"	25.00	44.00	56.00	4.98	14.70	17.30
1.1/4"	32.00	51.00	62.00	5.28	17.00	18.00
1.1/2"	40.00	60.00	75.00	5.56	17.80	18.40
2"	50.00	64.00	84.00	7.14	19.00	19.20
2.1/2"	65.00	83.00	102.00	7.65	23.60	28.90
3"	80.00	95.00	121.00	8.84	25.90	30.50
4"	100.00	114.00	152.00	11.18	27.70	33.00

Art No. CPS- 3105

## Threaded Socket/ Coupling

Forged 3000 LBS BLACK

'CPS' fittings are being used in textile industries also. our threaded socket is a versatile component on almost every type of pipeline for plugging fluid flow.



**Class Designation: 3000 Lbs**

**CPS Standard Reference: ASME B.16.11-2011**

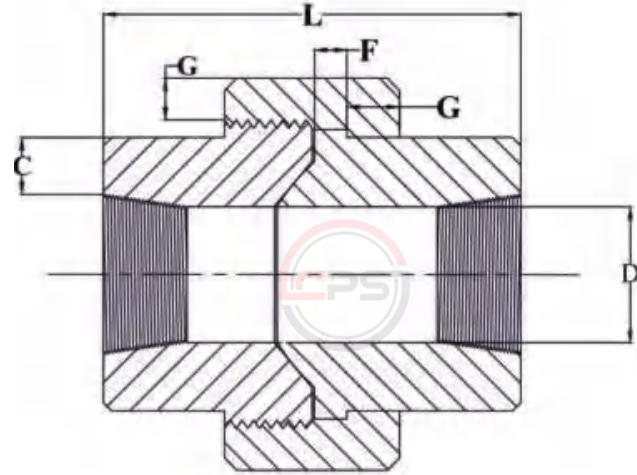
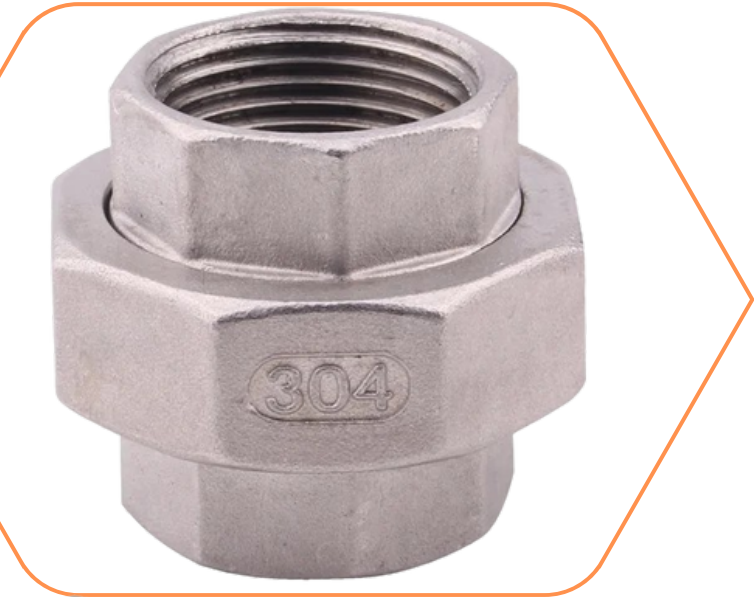
CREATIVE PIPING SOLUTIONS PRIVATE LIMITED		<a href="http://www.creativeforged.com">www.creativeforged.com</a>		
Nominal Size		End To End W	Out Side Diameter D	Threaded Length L2
Inch	MM	Min.	Min.	Min.
1/2"	15.00	48.00	28.00	13.60
3/4"	20.00	51.00	35.00	13.90
1"	25.00	60.00	44.00	17.30
1.1/4"	32.00	67.00	57.00	18.00
1.1/2"	40.00	79.00	64.00	18.40
2"	50.00	86.00	76.00	19.20
2.1/2"	65.00	92.00	92.00	28.90
3"	80.00	108.00	108.00	30.50
4"	100.00	121.00	140.00	33.00

Art No. CPS- 3106

## Threaded Union

Forged 3000 LBS BLACK

'CPS' fittings are being used in textile industries also. our threaded Union is a versatile component on almost every type of pipeline for plugging fluid flow.



**CREATIVE**  
PIPING SOLUTIONS PVT. LTD  
ISO 9001:2015, 14001:2004, 18001:2007 Certified Company

**Class Designation: 3000 Lbs**      **CPS Standard Reference: ASME B.16.11-2011**

**CREATIVE PIPING SOLUTIONS PRIVATE LIMITED**      ([www.creativeforged.com](http://www.creativeforged.com))

Nominal Size		Water way Bore D		Socket Wall Thickness C	Nut G	Length Assme. L
Inch	MM	Min.	Min.	Min.	Min.	L2
1/4"	8.00	9.45	25.00	3.30	3.18	45.00
3/8"	10.00	13.51	33.00	3.51	3.43	50.00
1/2"	15.00	17.07	38.00	4.09	3.68	50.00
3/4"	20.00	21.39	46.00	4.27	4.06	60.00
1"	25.00	26.98	56.00	4.98	4.45	65.00
1.1/4"	32.00	35.36	62.00	5.28	5.21	75.00
1.1/2"	40.00	41.20	75.00	5.54	5.59	80.00
2"	50.00	52.12	84.00	6.05	6.35	90.00
2.1/2"	65.00	64.31	102.00	7.67	7.44	103.00
3"	80.00	77.26	121.00	7.92	8.00	108.96

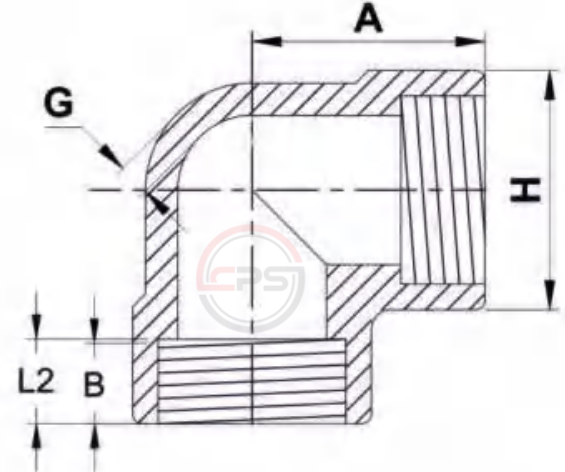
All Dimensions in MM

Art No. CPS- 6101

# Threaded Elbow 90°

Forged 6000 LBS BLACK

These '**CPS**' fittings are synonymous to precision & they prove in every field of application




**CREATIVE**  
PIPING SOLUTIONS PVT. LTD  
ISO 9001:2015, 14001:2004, 18001:2007 Certified Company

**Class Designation: 6000 Lbs**

**CPS Standard Reference: ASME B.16.11-2011**

**CREATIVE PIPING SOLUTIONS PRIVATE LIMITED** ([www.creativeforged.com](http://www.creativeforged.com))

Nominal Size		Centre To End A	Outside DIA H	Min. Wall Thickness G	Min. Length of THD	
Inch	MM	Min.	Min.	Min.	B	L2
1/8"	6.00	25.00	25.00	6.35	6.40	6.70
1/4"	8.00	28.00	33.00	6.60	8.10	10.20
3/8"	10.00	33.00	38.00	6.98	9.10	10.40
1/2"	15.00	38.00	46.00	8.15	10.90	13.60
3/4"	20.00	44.00	56.00	8.53	12.70	13.90
1"	25.00	51.00	62.00	9.93	14.70	17.30
1.1/4"	32.00	60.00	75.00	10.59	17.00	18.00
1.1/2"	40.00	64.00	84.00	11.07	17.80	18.40
2"	50.00	83.00	102.00	12.09	19.00	19.20
2.1/2"	65.00	95.00	121.00	15.29	23.60	28.90
3"	80.00	106.00	146.00	16.64	25.90	30.50
4"	100.00	114.00	152.00	18.67	27.70	33.00

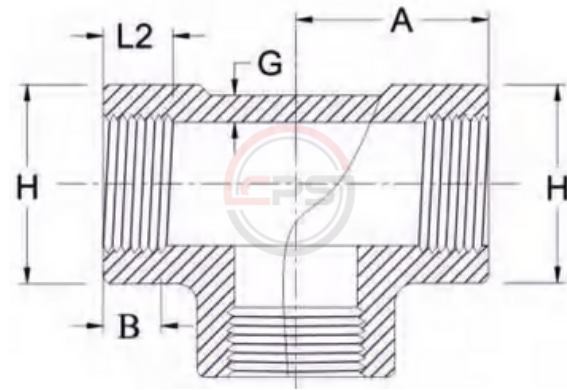
All Dimensions in MM

Art No. CPS- 6102

## Threaded Tee

Forged 6000 LBS BLACK

These '**CPS**' fittings are synonymous to precision & they prove in every field of application



**Class Designation: 6000 Lbs**

**CPS Standard Reference: ASME B.16.11-2011**

**CREATIVE PIPING SOLUTIONS PRIVATE LIMITED** ([www.creativeforged.com](http://www.creativeforged.com))

Nominal Size		Centre To End A	Outside DIA H	Min. Wall Thickness G	Min. Length of THD	
Inch	MM	Min.	Min.	Min.	B	L2
1/8"	6.00	25.00	25.00	6.35	6.40	6.70
1/4"	8.00	28.00	33.00	6.60	8.10	10.20
3/8"	10.00	33.00	38.00	6.98	9.10	10.40
1/2"	15.00	38.00	46.00	8.15	10.90	13.60
3/4"	20.00	44.00	56.00	8.53	12.70	13.90
1"	25.00	51.00	62.00	9.93	14.70	17.30
1 1/4"	32.00	60.00	75.00	10.59	17.00	18.00
1 1/2"	40.00	64.00	84.00	11.07	17.80	18.40
2"	50.00	83.00	102.00	12.09	19.00	19.20
2 1/2"	65.00	95.00	121.00	15.29	23.60	28.90
3"	80.00	106.00	146.00	16.64	25.90	30.50
4"	100.00	114.00	152.00	18.67	27.70	33.00

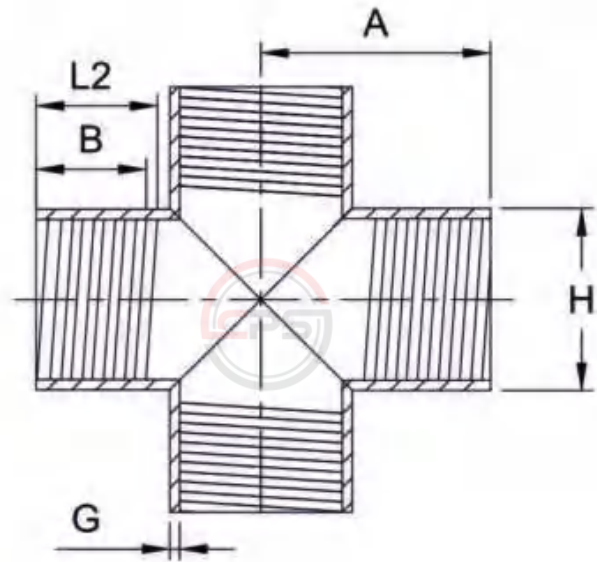


Art No. CPS- 6103

## Threaded Cross

Forged 6000 LBS BLACK

These '**CPS**' fittings are synonymous to precision & they prove in every field of application




**CREATIVE**  
PIPING SOLUTIONS PVT. LTD  
ISO 9001:2015, 14001:2004, 18001:2007 Certified Company

**Class Designation: 6000 Lbs**      **CPS Standard Reference: ASME B.16.11-2011**

**CREATIVE PIPING SOLUTIONS PRIVATE LIMITED**      ([www.creativeforged.com](http://www.creativeforged.com))

Nominal Size		Centre To End A	Outside DIA H	Min. Wall Thickness G	Min. Length of THD	
Inch	MM	Min.	Min.	Min.	B	L2
1/8"	6.00	25.00	25.00	6.35	6.40	6.70
1/4"	8.00	28.00	33.00	6.60	8.10	10.20
3/8"	10.00	33.00	38.00	6.98	9.10	10.40
1/2"	15.00	38.00	46.00	8.15	10.90	13.60
3/4"	20.00	44.00	56.00	8.53	12.70	13.90
1"	25.00	51.00	62.00	9.93	14.70	17.30
1 1/4"	32.00	60.00	75.00	10.59	17.00	18.00
1 1/2"	40.00	64.00	84.00	11.07	17.80	18.40
2"	50.00	83.00	102.00	12.09	19.00	19.20
2 1/2"	65.00	95.00	121.00	15.29	23.60	28.90
3"	80.00	106.00	146.00	16.64	25.90	30.50
4"	100.00	114.00	152.00	18.67	27.70	33.00

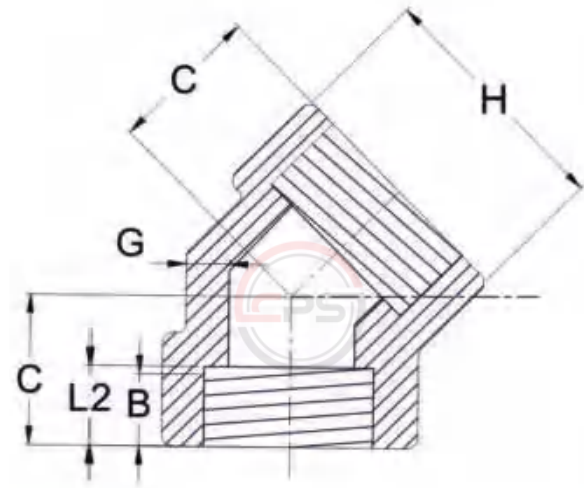
All Dimensions in MM

Art No. CPS- 6104

## Threaded Elbow 45°

Forged 6000 LBS BLACK

These '**CPS**' fittings are synonymous to precision & they prove in every field of application



**Class Designation: 6000 Lbs**      **CPS Standard Reference: ASME B.16.11-2011**

**CREATIVE PIPING SOLUTIONS PRIVATE LIMITED**      ([www.creativeforged.com](http://www.creativeforged.com))

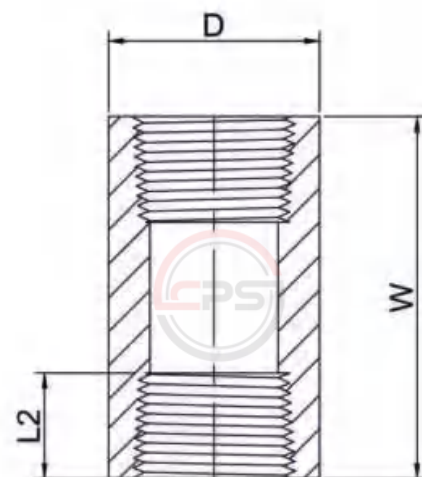
Nominal Size		Centre To End A	Outside DIA H	Min. Wall Thickness G	Min. Length of THD	
Inch	MM	Min.	Min.	Min.	B	L2
1/8"	6.00	19.00	25.00	6.35	6.40	6.70
1/4"	8.00	22.00	33.00	6.60	8.10	10.20
3/8"	10.00	25.00	38.00	6.98	9.10	10.40
1/2"	15.00	28.00	46.00	8.15	10.90	13.60
3/4"	20.00	33.00	56.00	8.53	12.70	13.90
1"	25.00	35.00	62.00	9.93	14.70	17.30
1.1/4"	32.00	43.00	75.00	10.59	17.00	18.00
1.1/2"	40.00	44.00	84.00	11.07	17.80	18.40
2"	50.00	52.00	102.00	12.09	19.00	19.20
3"	80.00	79.00	146.00	16.64	25.90	30.50
4"	100.00	79.00	152.00	18.67	27.70	33.00

Art No. CPS- 6105

## Threaded Socket/ Coupling

Forged 6000 LBS BLACK

'CPS' fittings are being used in textile industries also. our threaded Socket is a versatile component on almost every type of pipeline for plugging fluid flow.



**Class Designation: 6000 Lbs** **CPS Standard Reference: ASME B.16.11-2011**

**CREATIVE PIPING SOLUTIONS PRIVATE LIMITED** **([www.creativeforged.com](http://www.creativeforged.com))**

Nominal Size		End To End W	Out Side Diameter D	Threaded Length L2
Inch	MM	Min.	Min.	Min.
1/2"	15.00	48.00	38.00	13.60
3/4"	20.00	51.00	44.00	13.90
1"	25.00	60.00	57.00	17.30
1.1/4"	32.00	67.00	64.00	18.00
1.1/2"	40.00	79.00	76.00	18.40
2"	50.00	86.00	92.00	19.20
2.1/2"	65.00	92.00	108.00	28.90
3"	80.00	108.00	127.00	30.50
4"	100.00	121.00	159.00	33.00



# Swage Nipple

High Pressure Pipe Fittings  
With Threaded Connection  
3000 Lbs, 6000 Lbs.

 +91 - 7045212326  
 [sales@creativeforged.com](mailto:sales@creativeforged.com)  
 [www.creativeforged.com](http://www.creativeforged.com)

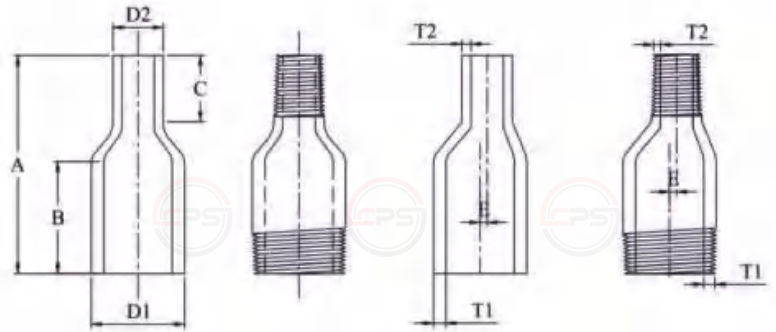


Art No. CPS- 3111

# Swage Nipple

## Forged 3000 LBS BLACK

Manufacturing 'CPS' pipe fittings for big industries unit asks for perfection. Our fitting live up to those standards.



**Class Designation: 3000 Lbs**      **CPS Standard Reference : BS 3799:1974**

**CREATIVE PIPING SOLUTIONS PRIVATE LIMITED**      ([www.creativeforged.com](http://www.creativeforged.com))

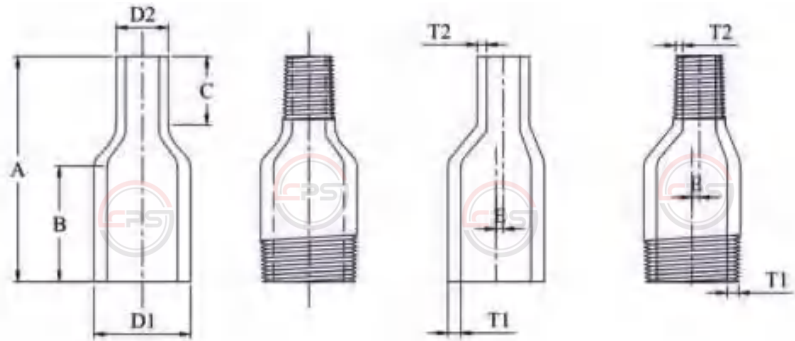
Nominal Size		Parallel Length, Min.			Out Side Diameter		Wall Thickness		Eccentricity E
Inch	MM	A (MM)	B (MM)	C (MM)	D1 (MM)	D2 (MM)	T1 SCH (80) (XS)	T1 SCH (80) (XS)	Min.
3/8" X 1/4"	10 X 8	76.00	48.56	16.00	17.10	13.70	3.20	3.00	1.60
1/2" X 3/8"	15 X 10	89.00	56.00	19.00	21.30	17.10	3.70	3.20	1.60
1/2" X 1/4"	15 X 8	89.00	56.00	19.00	21.30	13.70	3.70	3.00	3.20
3/4" X 1/2"	20 X 15	95.00	57.00	22.00	21.30	21.30	3.90	3.70	2.40
3/4" X 3/8"	20 X 10	95.00	57.00	22.00	26.70	17.10	3.90	3.20	4.00
1" X 3/4"	25 X 20	102.00	64.00	22.00	26.70	26.70	4.50	3.90	2.80
1" X 1/2"	25 X 15	102.00	64.00	22.00	33.40	21.30	4.50	3.70	5.20
1.1/2" X 1"	40 X 25	114.00	70.00	25.00	33.40	33.40	5.10	4.50	6.70
1.1/2" X 3/4"	40 X 20	114.00	70.00	25.00	48.30	26.70	5.10	3.90	9.50
1.1/2" X 1/2"	40 X 15	114.00	70.00	25.00	48.30	21.30	5.10	3.70	11.90
2" X 1.1/2"	50 X 40	165.00	108.00	29.00	48.30	48.30	5.50	5.10	5.60
2" X 1"	50 X 25	165.00	108.00	29.00	60.30	33.40	5.50	4.50	12.70
2" X 3/4"	50 X 20	165.00	108.00	29.00	60.30	26.70	5.50	3.90	15.50
2" X 1/2"	50 X 15	165.00	108.00	29.00	60.30	21.30	5.50	3.70	17.50
2.1/2" X 2"	65 X 50	178.00	114.00	32.00	73.00	60.30	7.00	5.50	4.80
2.1/2" X 1.1/2"	65 X 40	178.00	114.00	32.00	73.00	48.30	7.00	5.10	10.30
3" X 2.1/2"	80 X 65	203.00	133.00	41.00	88.90	73.00	7.60	7.00	7.10
3" X 2"	80 X 50	203.00	133.00	41.00	88.90	60.30	7.60	5.50	11.90
3" X 1.1/2"	80 X 40	203.00	133.00	41.00	88.90	48.30	7.60	5.10	17.50
4" X 3"	100 X 80	229.00	140.00	48.00	114.30	88.90	8.60	7.60	11.90
4" X 2.1/2"	100 X 65	229.00	140.00	48.00	114.30	73.00	8.60	7.00	19.10

Art No. CPS- 6111

# Swage Nipple

Forged 6000 LBS BLACK

Manufacturing 'CPS' pipe fittings for the big industries units asks for perfection. Our fittings live up to those standards.



**Class Designation: 6000 Lbs** **CPS Standard Reference : BS 3799:1974**

**CREATIVE PIPING SOLUTIONS PRIVATE LIMITED** ([www.creativeforged.com](http://www.creativeforged.com))

Nominal Size		Parallel Length,			Min. Out Side Diameter		Wall Thickness		Wall Thickness Screwed		Eccentricity E
Inch	MM	A (MM)	B (MM)	C (MM)	D1 (MM)	D2 (MM)	T1 SCH (160) (XS)	T2 SCH (160) (XS)	Min.	Min.	Min.
3/8" X 1/4"	10 X 8	76.00	48.00	16.00	17.10	13.70	4.00	-	6.40	-	1.60
1/2" X 3/8"	15 X 10	89.00	56.00	19.00	21.30	17.10	4.80	-	7.50	-	1.60
1/2" X 1/4"	15 X 8	89.00	56.00	19.00	21.30	13.70	4.80	-	7.50	-	3.20
3/4" X 1/2"	20 X 15	95.00	57.00	22.00	21.30	21.30	5.60	4.80	7.80	7.50	2.40
3/4" 3/8"	20 X 10	95.00	57.00	22.00	26.70	17.10	5.60	-	7.80	-	4.00
1" X 3/4"	25 X 20	102.00	64.00	22.00	26.70	26.70	6.40	5.60	9.10	7.80	2.80
1" X 1/2"	25 X 15	102.00	64.00	22.00	33.40	21.30	6.40	4.80	9.10	7.50	5.20
1.1/2" X 1"	40 X 25	114.00	70.00	25.00	33.40	33.40	7.10	6.40	10.20	9.10	6.70
1.1/2" X 3/4"	40 X 20	114.00	70.00	25.00	48.30	26.70	7.10	5.60	10.20	7.80	9.50
1.1/2" X 1/2"	40 X 15	114.00	70.00	25.00	48.30	21.30	7.10	4.80	10.20	7.50	11.90
2" X 1.1/2"	50 X 40	165.00	108.00	29.00	48.30	48.30	8.70	7.10	11.10	10.20	5.60
2" X 1"	50 X 25	165.00	108.00	29.00	60.30	33.40	8.70	6.40	11.10	9.10	12.70
2" X 3/4"	50 X 20	165.00	108.00	29.00	60.30	26.70	8.70	5.60	11.10	7.80	15.50
2" X 1/2"	50 X 15	165.00	108.00	29.00	60.30	21.30	8.70	4.80	11.10	7.50	17.50
2.1/2" X 2"	65 X 50	178.00	114.00	32.00	73.00	60.30	9.50	8.70	14.00	11.10	4.80
2.1/2" X 1.1/2"	65 X 40	178.00	114.00	32.00	73.00	48.30	9.50	7.10	14.00	10.20	10.30
3" X 2.1/2"	80 X 65	203.00	133.00	41.00	88.90	73.00	11.10	9.50	15.20	14.00	7.10
3" X 2"	80 X 50	203.00	133.00	41.00	88.90	60.30	11.10	8.70	15.20	11.10	11.90
3" X 1.1/2"	80 X 40	203.00	133.00	41.00	88.90	48.30	11.10	7.10	15.20	10.20	17.50
4" X 3"	100 X 80	229.00	140.00	48.00	114.30	88.90	13.50	11.10	17.10	15.20	11.90
4" X 2.1/2"	100 X 65	229.00	140.00	48.00	114.30	73.00	13.50	9.50	17.10	14.00	19.10



**Forged Steel  
Pipe Fittings with  
Threaded end connection  
1000 Lbs.**

 **+91 - 7045212326**  
 **sales@creativeforged.com**  
 **www.creativeforged.com**

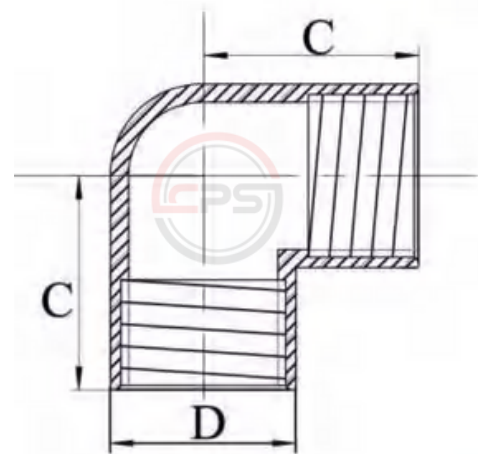


Art No. CPS- 1001

# Elbow 90°

Forged 1000 LBS BLACK

Manufacturing 'CPS' pipe fittings for the big refineries ask for perfection. Our fittings live up to required standards of perfection in quality and endurance.



Class Designation: 1000 Lbs **CPS Standard Reference: IS: 1239 (Part 2) 2011/BS EN 10241-2000**

**CREATIVE PIPING SOLUTIONS PRIVATE LIMITED** [www.creativeforged.com](http://www.creativeforged.com)

Nominal Size		Centre To Face C	Minimum Outer DIA D
Inch	MM	Min.	Min.
1/8"	6.00	16.00	15.00
1/4"	8.00	22.00	18.50
3/8"	10.00	24.00	22.00
1/2"	15.00	32.00	27.00
3/4"	20.00	35.00	32.50
1"	25.00	43.00	39.50
1.1/4"	32.00	51.00	49.00
1.1/2"	40.00	52.00	56.00
2"	50.00	64.00	68.00
2.1/2"	65.00	76.00	84.00
3"	80.00	89.00	98.00
4"	100.00	115.00	124.00
5"	125.00	140.00	151.00
6"	150.00	160.00	178.00

All dimensions in MM. Material is available in NPT/BSPT & BSP threaded end connection

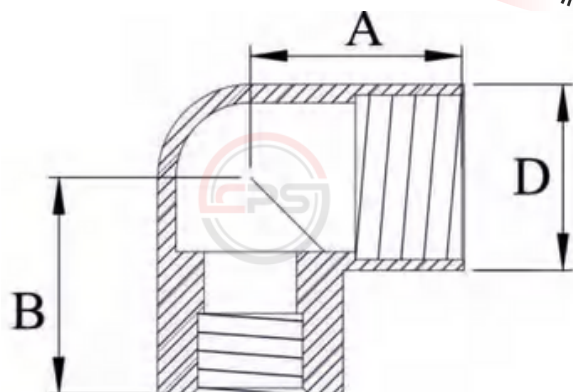


Art No. CPS- 1002

# Reducing Elbow 90°

Forged 1000 LBS BLACK

Manufacturing 'CPS' pipe fittings for the mills ask for perfection. Our reducing elbow live up to the required standards of perfection from every angle.



**CREATIVE**  
PIPING SOLUTIONS PVT. LTD  
ISO 9001:2015, 14001:2004, 18001:2007 Certified Company

**Class Designation: 1000 Lbs**

**CPS Standard Reference: IS: 1239 (Part 2) 2011/BS EN 10241-2000**

**CREATIVE PIPING SOLUTIONS PRIVATE LIMITED**

**www.creativeforged.com**

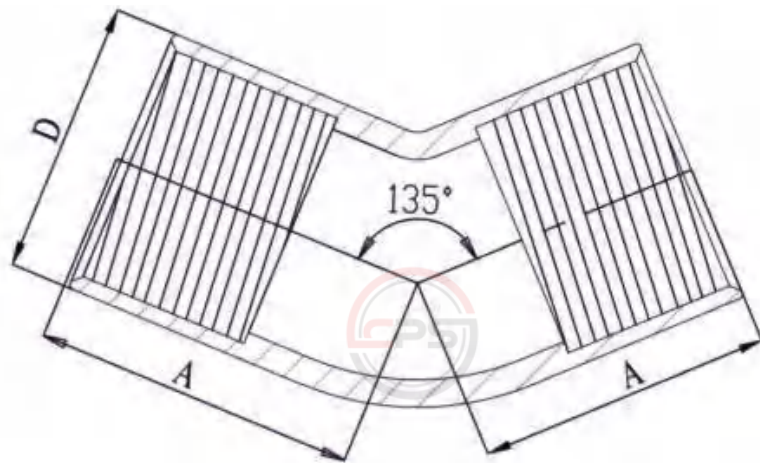
Nominal Size Of Outlet	Min. Length Of Centre To Face		Minimum Outer DIA
	A	B	
8 X 6	21.00	22.00	18.50
10 X 6	21.00	24.00	22.00
10 X 8	22.00	24.00	22.00
15 X 8	25.00	32.00	27.00
15 X 10	27.00	32.00	27.00
20 X 8	27.00	35.00	32.50
20 X 10	29.00	35.00	32.50
20 X 15	32.00	35.00	32.50
25 X 10	32.00	43.00	39.50
25 X 15	35.00	43.00	39.50
25 X 20	38.00	43.00	39.50
32 X 15	38.00	51.00	49.00
32 X 20	41.00	51.00	49.00
32 X 25	44.00	51.00	49.00
40 X 15	38.00	52.00	56.00
40 X 20	41.00	52.00	56.00
40 X 25	44.00	52.00	56.00
40 X 32	38.00	52.00	56.00
50 X 15	41.00	64.00	68.00
50 X 20	44.00	64.00	68.00
50 X 25	48.00	64.00	68.00
50 X 32	52.00	64.00	68.00
50 X 40	56.00	64.00	68.00
65 X 40	60.00	76.00	84.00
65 X 50	67.00	76.00	84.00
80 X 25	60.00	89.00	98.00

Art No. CPS- 1003

# Elbow 45°

Forged 1000 LBS BLACK

Manufacturing 'CPS' pipe fittings for the big refineries ask for perfection. Our fittings live up to required standards of perfection in quality and endurance.



**Class Designation: 1000 Lbs**

**CPS Standard Reference: IS: 1239 (Part 2) 2011/BS EN 10241-2000**

**CREATIVE PIPING SOLUTIONS PRIVATE LIMITED**

**www.creativeforged.com**

Nominal Size Of Outlet		Centre To Face C (Min.)	Minimum Outer DIA D
Inch	MM	Min.	Min.
1/8"	6.00	16.00	15.00
1/4"	8.00	17.00	18.50
3/8"	10.00	19.00	22.00
1/2"	15.00	22.00	27.00
3/4"	20.00	27.00	32.50
1"	25.00	33.00	39.50
1 1/4"	32.00	38.00	49.00
1 1/2"	40.00	44.00	56.00
2"	50.00	51.00	68.00
2 1/2"	65.00	60.00	84.00
3"	80.00	73.00	98.00
4"	100.00	105.00	124.00

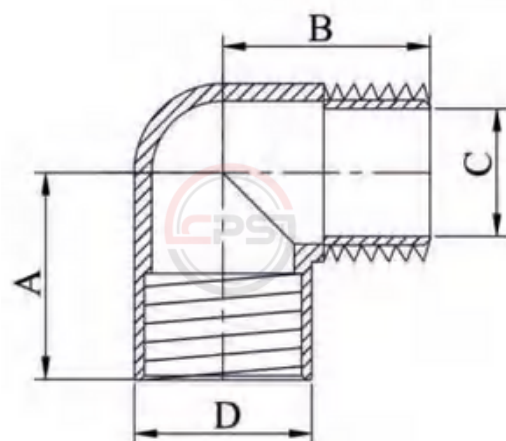
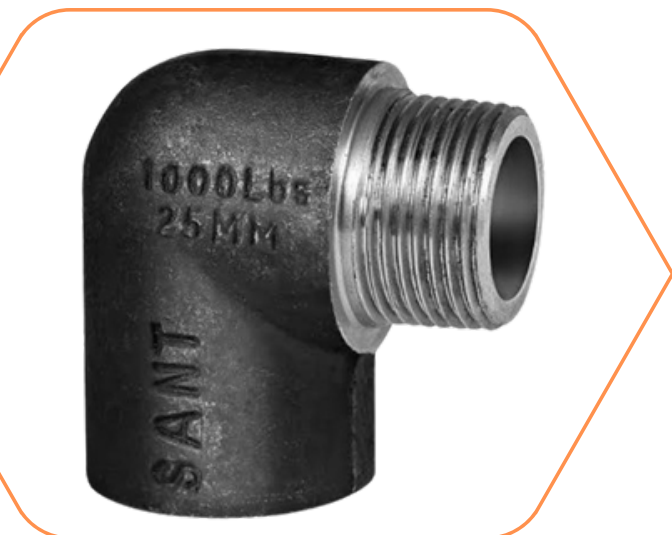
All dimensions in MM. Material is available in NPT/BSPT & BSP threaded end connection

Art No. CPS- 1004

# Male/Female Elbow 90°

Forged 1000 LBS BLACK

Manufacturing 'CPS' pipe fittings for the mills ask for perfection. Our reducing elbow live up to the required standards of perfection from every angle.



Class Designation: 1000 Lbs CPS Standard Reference: IS: 1239 (Part 2) 2011/BS EN 10241-2000

**CREATIVE PIPING SOLUTIONS PRIVATE LIMITED** [www.creativeforged.com](http://www.creativeforged.com)

Nominal Size		Min. Length Of Centre To Face A	Min. Length Of Centre To Face B	Bore DIA Of Male End C	Minimum Outer DIA D	
Inch	MM	Min.	Min.	Min.	B	L2
1/4"	8.00	19.00	27.00	6.50	8.00	18.50
3/8"	10.00	21.00	29.00	8.50	10.50	22.00
1/2"	15.00	25.00	35.00	11.50	13.00	27.00
3/4"	20.00	30.00	40.00	18.00	21.00	32.50
1"	25.00	37.00	46.00	24.00	26.00	39.50
1.1/4"	32.00	43.00	54.00	30.00	32.00	49.00
1.1/2"	40.00	49.00	57.00	37.00	39.00	56.00
2"	50.00	59.00	70.00	48.00	51.00	68.00
2.1/2"	65.00	68.00	83.00	62.00	66.00	84.00
3"	80.00	81.00	94.00	75.00	79.00	98.00

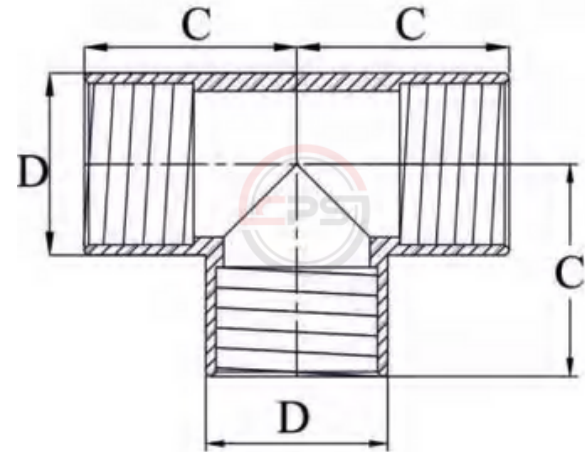
All dimensions in MM. Material is available in NPT/BSPT & BSP threaded end connection

Art No. CPS- 1005

# Tee

Forged 1000 LBS BLACK

Forged Steel '**CPS**' fittings for petrochemical industries require high quality, long life & total safety. Our fittings are made to fit these requirements.



**Class Designation: 1000 Lbs**      **CPS Standard Reference: IS: 1239 (Part 2) 2011/BS EN 10241-2000**

**CREATIVE PIPING SOLUTIONS PRIVATE LIMITED**      **www.creativeforged.com**

Nominal Size		Centre To Face C	Minimum Outer DIA D
Inch	MM	Min.	Min.
1/8"	6.00	16.00	15.00
1/4"	8.00	22.00	18.50
3/8"	10.00	24.00	22.00
1/2"	15.00	32.00	27.00
3/4"	20.00	35.00	32.50
1"	25.00	43.00	39.50
1.1/4"	32.00	51.00	49.00
1.1/2"	40.00	52.00	56.00
2"	50.00	64.00	68.00
2.1/2"	65.00	76.00	84.00
3"	80.00	89.00	98.00
4"	100.00	115.00	124.00
5"	125.00	140.00	151.00
6"	150.00	160.00	178.00

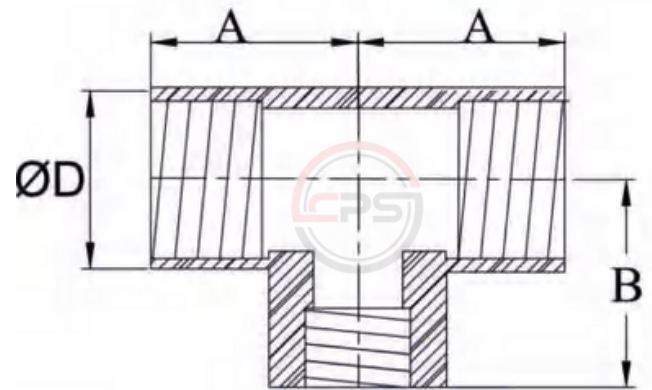
All dimensions in MM. Material is available in NPT/BSPT & BSP threaded and connection

Art No. CPS- 1006

# Reducing Tee

Forged 1000 LBS BLACK

Our '**CPS**' fittings proved their operational superiority on fuel gas systems and are number one. these tees are made to perfection.



**Class Designation: 1000 Lbs**      **CPS Standard Reference: IS: 1239 (Part 2) 2011/BS EN 10241-2000**

**CREATIVE PIPING SOLUTIONS PRIVATE LIMITED**      [www.creativeforged.com](http://www.creativeforged.com)

Nominal Size Of Outlet	Min. Length Of Centre To Face A	Min. Length Of Centre To Face B	Minimum Outer DIA D	Nominal Size Of Outlet	Min. Length Of Centre To Face A	Min. Length Of Centre To Face B	Minimum Outer DIA D
8 X 6	21.00	22.00	18.50	40 X 20	41.00	52.00	56.00
10 X 6	21.00	24.00	22.00	40 X 25	48.00	52.00	56.00
10 X 8	22.00	24.00	22.00	40 X 32	49.00	52.00	56.00
15 X 8	25.00	32.00	27.00	50 X 15	41.00	64.00	68.00
15 X 10	27.00	32.00	27.00	50 X 20	44.00	64.00	68.00
20 X 8	27.00	35.00	32.50	50 X 25	48.00	64.00	68.00
20 X 10	29.00	35.00	32.50	50 X 32	52.00	64.00	68.00
20 X 15	32.00	35.00	32.50	50 X 40	56.00	64.00	68.00
25 X 10	32.00	43.00	39.50	65 X 40	60.00	76.00	84.00
25 X 15	35.00	43.00	39.50	65 X 50	67.00	76.00	84.00
25 X 20	38.00	43.00	39.50	80 X 25	60.00	89.00	98.00
32 X 15	38.00	51.00	49.00	80 x 32	64.00	89.00	98.00
32 X 20	41.00	51.00	49.00	80 x 40	67.00	89.00	98.00
32 X 25	44.00	51.00	49.00	80 x50	73.00	89.00	98.00
40 X 15	38.00	52.00	56.00	80 x 65	79.00	89.00	98.00

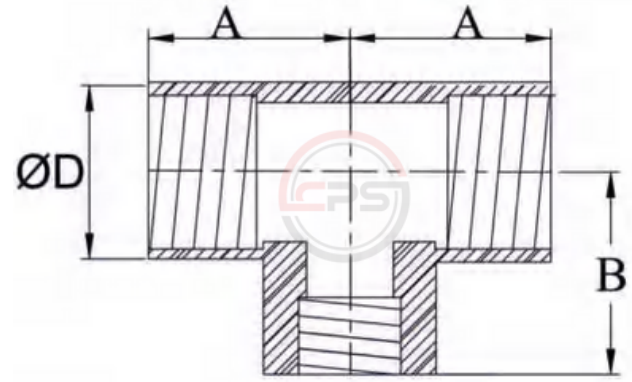
All dimensions in MM. Material is available in NPT/BSPT & BSP threaded enf connection

Art No. CPS- 1007

# Cross

Forged 1000 LBS BLACK

These 'CPS' fittings are normally used in hot fluids and steam applications. Our Fittings need to be equally perfect from all ends.



**Class Designation: 1000 Lbs**      **CPS Standard Reference: IS: 1239 (Part 2) 2011/BS EN 10241-2000**

**CREATIVE PIPING SOLUTIONS PRIVATE LIMITED**      **www.creativeforged.com**

Nominal Size		Centre To Face C	Minimum Outer DIA D
Inch	MM	Min.	Min.
1/8"	6.00	16.00	15.00
1/4"	8.00	22.00	18.50
3/8"	10.00	24.00	22.00
1/2"	15.00	32.00	27.00
3/4"	20.00	35.00	32.50
1"	25.00	43.00	39.50
1.1/4"	32.00	51.00	49.00
1.1/2"	40.00	52.00	56.00
2"	50.00	64.00	68.00
2.1/2"	65.00	76.00	84.00
3"	80.00	89.00	98.00
4"	100.00	115.00	124.00

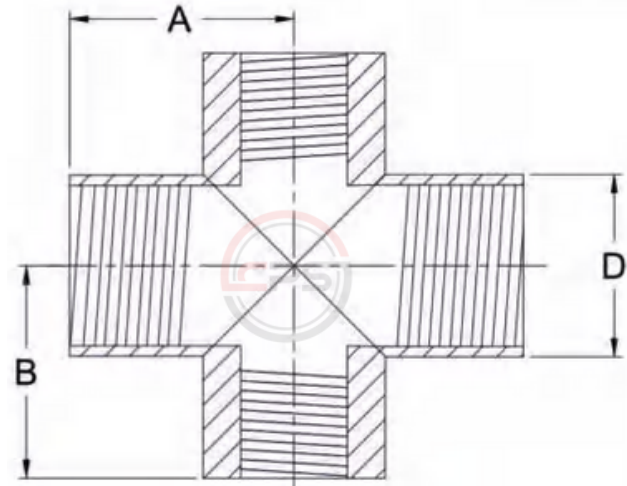
All dimensions in MM. Material is available in NPT/BSPT & BSP threaded end connection

Art No. CPS- 1008

# Reducing Cross Threaded

Forged 1000 LBS BLACK

Our '**CPS**' fittings proved their operational superiority on fuel gas systems and are number one. these tees are made to perfection.



**Class Designation: 1000 Lbs**

**CPS Standard Reference: IS: 1239 (Part 2) 2011/BS EN 10241-2000**

**CREATIVE PIPING SOLUTIONS PRIVATE LIMITED** **www.creativeforged.com**

Nominal Size Of Outlet	Min. Length Of Centre To Face A	Min. Length Of Centre To Face B	Minimum Outer DIA D	Nominal Size Of Outlet	Min. Length Of Centre To Face A	Min. Length Of Centre To Face B	Minimum Outer DIA D
8 X 6	21.00	22.00	18.50	40 X 20	41.00	52.00	56.00
10 X 6	21.00	24.00	22.00	40 X 25	48.00	52.00	56.00
10 X 8	22.00	24.00	22.00	40 X 32	49.00	52.00	56.00
15 X 8	25.00	32.00	27.00	50 X 15	41.00	64.00	68.00
15 X 10	27.00	32.00	27.00	50 X 20	44.00	64.00	68.00
20 X 8	27.00	35.00	32.50	50 X 25	48.00	64.00	68.00
20 X 10	29.00	35.00	32.50	50 X 32	52.00	64.00	68.00
20 X 15	32.00	35.00	32.50	50 X 40	56.00	64.00	68.00
25 X 10	32.00	43.00	39.50	65 X 40	60.00	76.00	84.00
25 X 15	35.00	43.00	39.50	65 X 50	67.00	76.00	84.00
25 X 20	38.00	43.00	39.50	80 X 25	60.00	89.00	98.00
32 X 15	38.00	51.00	49.00	80 x 32	64.00	89.00	98.00
32 X 20	41.00	51.00	49.00	80 x 40	67.00	89.00	98.00
32 X 25	44.00	51.00	49.00	80 x50	73.00	89.00	98.00
40 X 15	38.00	52.00	56.00	80 x 65	79.00	89.00	98.00

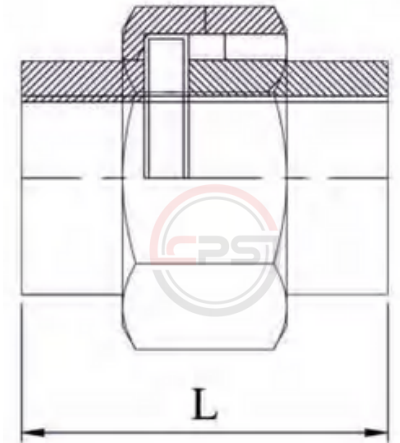
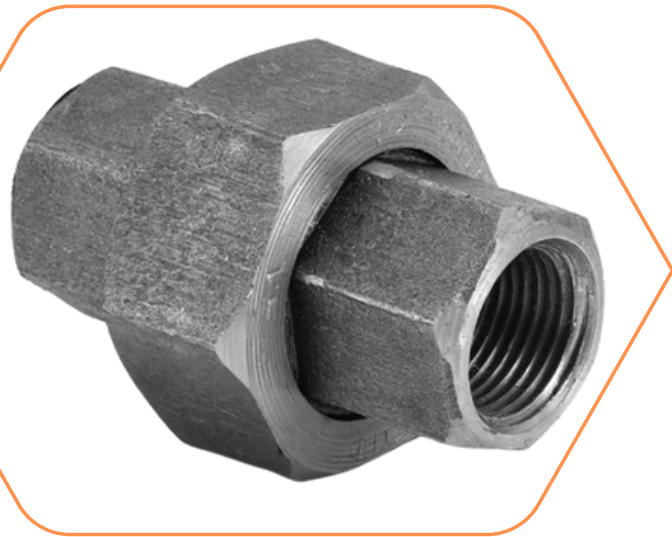
All dimensions in MM. Material is available in NPT/BSPT & BSP threaded enf connection

Art No. CPS- 1009

# Union

Forged 1000 LBS BLACK

Perfect threading and connection are what our 'CPS' fittings are known for. Our forged steel fittings are much sought after in railways due to their ruggedness and reliable service life.



**Class Designation: 1000 Lbs** **CPS Standard Reference: IS: 1239 (Part 2) 2011/BS EN 10241-2000**

<b>CREATIVE PIPING SOLUTIONS PRIVATE LIMITED</b>		<b>www.creativeforged.com</b>
<b>Nominal Size</b>		<b>Minimum Length L</b>
<b>Inch</b>	<b>MM</b>	<b>Min.</b>
1/8"	6.00	38.00
1/4"	8.00	44.00
3/8"	10.00	51.00
1/2"	15.00	57.00
3/4"	20.00	67.00
1"	25.00	76.00
1.1/4"	32.00	85.00
1.1/2"	40.00	100.00
2"	50.00	110.00
2.1/2"	65.00	120.00
3"	80.00	135.00
4"	100.00	160.00

All dimensions in MM. Material is available in NPT/BSPT & BSP threaded end connection

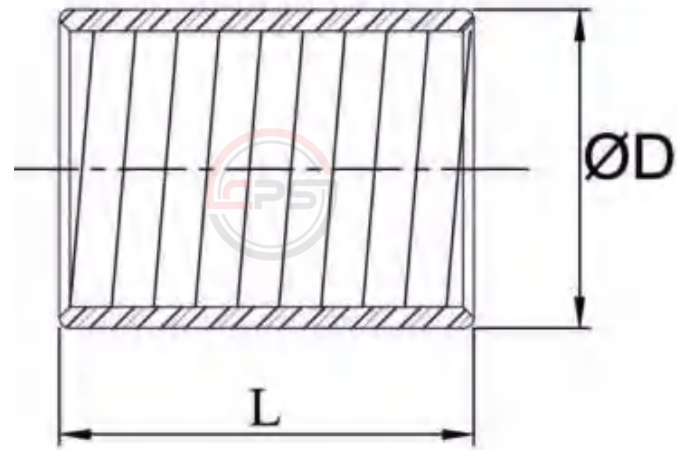


Art No. CPS- 1010

# Socket/Coupling

Forged 1000 LBS BLACK

Our '**CPS**' fittings true to their name are very reliable in any pipe line network which is very essential in harbours.



**Class Designation: 1000 Lbs**      **CPS Standard Reference: IS: 1239 (Part 2) 2011/BS EN 10241-2000**

**CREATIVE PIPING SOLUTIONS PRIVATE LIMITED**      **www.creativeforged.com**

Nominal Size		Minimum Length L	Minimum Outer DIA D
Inch	MM	Min.	Min.
1/8"	6.00	19.00	15.00
1/4"	8.00	27.00	18.50
3/8"	10.00	28.00	22.00
1/2"	15.00	37.00	27.00
3/4"	20.00	39.00	32.50
1"	25.00	46.00	39.50
1 1/4"	32.00	51.00	49.00
1 1/2"	40.00	51.00	56.00
2"	50.00	60.00	68.00
2 1/2"	65.00	69.00	84.00
3"	80.00	75.00	98.00
4"	100.00	87.00	124.00
5"	125.00	96.00	151.00
6"	150.00	96.00	178.00

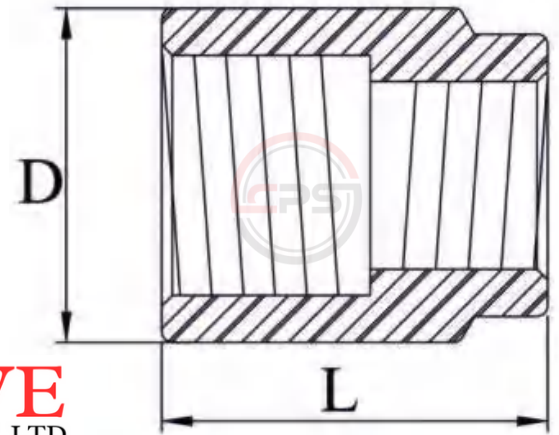
All dimensions in MM. Material is available in NPT/BSPT & BSP threaded end connection

Art No. CPS- 1011

# Reducing Socket/Coupling

Forged 1000 LBS BLACK

Manufacturing these 'CPS' Reducing socket, is a work of art which we have perfected from all angles.



**Class Designation: 1000 Lbs**      **CPS Standard Reference: IS: 1239 (Part 2) 2011/BS EN 10241-2000**

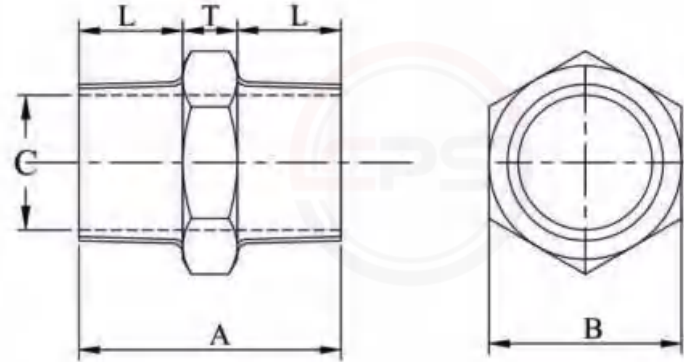
CREATIVE PIPING SOLUTIONS PRIVATE LIMITED		www.creativeforged.com	
Nominal Size Of Outlet	Minimum Length L	Minimum Outer DIA	D
MM	MM	Min.	
8 X 6	25.00	18.50	
10 X 6	30.00	22.00	
10 X 8	29.00	22.00	
15 X 6	41.00	27.00	
15 X 8	40.00	27.00	
15 X 10	38.00	27.00	
20 X 8	44.00	32.50	
20 X 10	43.00	32.50	
20 X 15	41.00	39.50	
25 X 8	54.00	39.50	
25 X 10	52.00	39.50	
25 X 15	51.00	32.50	
25 X 20	49.00	32.50	
32 X 10	60.00	49.00	
32 X 15	59.00	49.00	
32 X 20	57.00	49.00	
32 X 25	56.00	49.00	
40 X 15	65.00	56.00	
40 X 20	64.00	56.00	
40 X 25	62.00	56.00	
40 X 32	60.00	56.00	
50 X 15	70.00	68.00	
50 X 20	68.00	68.00	
50 X 25	67.00	68.00	
50 X 32	65.00	68.00	
50 X 40	64.00	68.00	
65 X 25	76.00	84.00	
65 X 32	75.00	84.00	
65 X 40	73.00	84.00	
65 X 50	71.00	84.00	
80 X 25	86.00	98.00	
80 X 32	84.00	98.00	
80 X 40	83.00	98.00	
80 X 50	81.00	98.00	
80 X 65	79.00	98.00	

Art No. CPS- 1012

# Hex. Nipple

Forged 1000 LBS BLACK

Our '**CPS**' fittings true to their name are very reliable in any pipe line network which is very essential in harbours.



Class Designation: 1000 Lbs **CPS Standard Reference: IS: 1239 (Part 2) 2011/BS EN 10241-2000**

**CREATIVE PIPING SOLUTIONS PRIVATE LIMITED** [www.creativeforged.com](http://www.creativeforged.com)

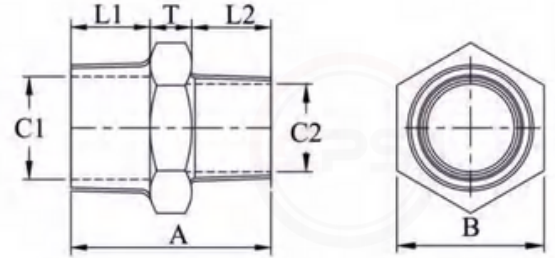
Nominal Size Of Outlet		Min. Length Of Thread For Basic Gauge Length Plus Dia Clearance L	Thickness Of Hexagon T	Minimum Overall Length A	Minimum Diameter Of Bore C	Width Across Flats Of Hexagon B
Inch	MM	Min.	Min.	Min.	Min.	Min.
1/8"	6.00	9.50	6.00	25.00	5.50	13.10
1/4"	8.00	12.50	6.00	31.00	6.50	15.50
3/8"	10.00	12.50	8.00	33.00	9.50	17.90
1/2"	15.00	17.50	8.00	43.00	12.50	23.00
3/4"	20.00	19.00	10.00	48.00	19.00	27.80
1"	25.00	21.00	10.00	52.00	25.00	35.30
1.1/4"	32.00	24.00	11.00	59.00	32.00	47.20
1.1/2"	40.00	24.00	13.00	61.00	38.00	52.00
2"	50.00	27.00	14.00	68.00	51.00	61.10
2.1/2"	65.00	32.00	16.00	80.00	64.00	79.00
3"	80.00	35.00	19.00	89.00	76.00	92.00
4"	100.00	40.00	22.00	102.00	100.00	117.00

Art No. CPS- 1013

# Reducing Hex. Nipple

Forged 1000 LBS BLACK

When ever the word automobiles is used, it personifies strength & our '**CPS**' fittings means strength in every way.



**CREATIVE**  
PIPING SOLUTIONS PVT. LTD  
ISO 9001:2015, 14001:2004, 18001:2007 Certified Company

Class Designation: 1000 Lbs

CPS Standard Reference: IS: 1239 (Part 2) 2011/BS EN 10241-2000

**CREATIVE PIPING SOLUTIONS PRIVATE LIMITED**

[www.creativeforged.com](http://www.creativeforged.com)

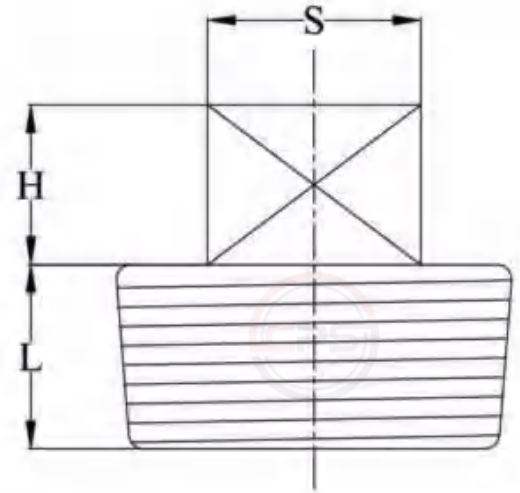
Nominal Size Of Outlet	Min. Length Of Thread For Basic Gauge Length Plus Dia Clearance L		Thickness Of Hexagon T	Minimum Overall Length A	Minimum Diameter Of Bore		Width Across Flats Of Hexagon B	
	MM	L1			L2	Min.		C1
8 X 6		12.50	9.50	6.00	28.00	6.50	5.50	15.50
10 X 8		12.50	12.50	8.00	33.00	9.50	6.50	17.90
15 X 8		17.50	12.50	8.00	38.00	12.50	6.50	23.00
15 X 10		17.50	12.50	8.00	38.00	12.50	9.50	23.00
20 X 10		19.00	12.50	10.00	41.50	19.00	9.50	27.80
20 X 15		19.00	17.50	10.00	46.50	19.00	12.50	27.80
25 X 15		21.00	17.50	10.00	48.50	25.00	12.50	35.30
25 X 20		21.00	19.00	10.00	50.00	25.00	19.00	35.30
32 X 20		24.00	19.00	11.00	54.00	32.00	19.00	47.20
32 X 25		24.00	21.00	11.00	56.00	32.00	25.00	47.20
40 X 25		24.00	21.00	13.00	58.00	38.00	25.00	52.00
40 X 32		24.00	24.00	13.00	61.00	38.00	32.00	52.00
50 X 32		27.00	24.00	14.00	65.00	51.00	32.00	61.10
50 X 40		27.00	24.00	14.00	65.00	51.00	38.00	61.10
65 X 32		32.00	24.00	16.00	72.00	64.00	32.00	79.00
65 X 40		32.00	24.00	16.00	72.00	64.00	38.00	79.00
65 X 50		32.00	27.00	16.00	75.00	64.00	51.00	79.00
80 X 40		35.00	24.00	19.00	78.00	76.00	38.00	92.00
80 X 50		35.00	27.00	19.00	81.00	76.00	51.00	92.00
80 X 65		35.00	32.00	19.00	86.00	76.00	64.00	92.00

Art No. CPS- 1014

# Plug

Forged 1000 LBS BLACK

'CPS' fittings are being used in textile industries also. our threaded Socket is a versatile component on almost every type of pipeline for plugging fluid flow.



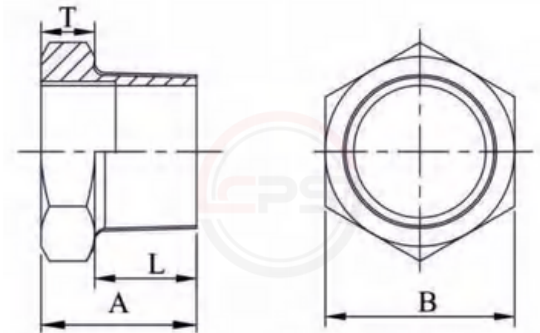
**Class Designation: 1000 Lbs**      CPS Standard Reference: IS: 1239 (Part 2) 2011/BS EN 10241-2000

CREATIVE PIPING SOLUTIONS PRIVATE LIMITED		www.creativeforged.com		
Nominal Size		Min. Length Of Thread For Basic Gauge L	Approx. Size Of Square S	Approx. Height Of Square H
Inch	MM	Min.	Min.	Min.
1/8"	6.00	6.50	6.00	6.00
1/4"	8.00	9.70	9.00	6.00
3/8"	10.00	10.10	11.00	10.00
1/2"	15.00	13.20	13.00	10.00
3/4"	20.00	14.50	14.00	12.00
1"	25.00	16.80	17.00	12.00
1.1/4"	32.00	19.10	22.00	16.00
1.1/2"	40.00	19.10	27.00	16.00
2"	50.00	23.40	32.00	19.19
2.1/2"	65.00	26.70	37.00	19.00
3"	80.00	29.80	37.00	22.00

Art No. CPS- 1015

# Hex. Bush

Forged 1000 LBS BLACK




**CREATIVE**  
PIPING SOLUTIONS PVT. LTD  
ISO 9001:2015, 14001:2004, 18001:2007 Certified Company

**Class Designation: 1000 Lbs**

**CPS Standard Reference: IS: 1239 (Part 2) 2011/BS EN 10241-2000**

**CREATIVE PIPING SOLUTIONS PRIVATE LIMITED** **www.creativeforged.com**

Nominal Size Of Outlet	Min. Length Of Thread For Basic Gauge Length Plus Clearance	Thickness Of Hexagon T	Overall Length A	Width Across Flats Of Hexagon B
MM	MM	Min.	Min.	Min.
8 X 6	12.50	6.00	18.50	15.50
10 X 8	12.50	7.00	20.50	17.90
15 X 8	17.50	8.00	25.50	23.00
15 X 10	17.50	7.00	25.50	23.00
20 X 10	19.00	10.00	29.00	27.80
20 X 15	19.00	10.00	29.00	27.80
25 X 15	21.00	10.00	31.00	35.30
25 X 20	21.00	10.00	31.00	35.30
32 X 15	24.00	11.00	35.00	47.20
32 X 20	24.00	11.00	35.00	47.20
32 X 25	24.00	11.00	35.00	47.20
40 X 20	24.00	13.00	37.00	52.00
40 X 25	24.00	13.00	37.00	52.00
40 X 32	24.00	13.00	37.00	52.00
50 X 25	27.00	14.00	41.00	61.10
50 X 32	27.00	14.00	41.00	61.10
50 X 40	27.00	14.00	41.00	61.10
65 X 32	32.00	16.00	48.00	79.00
65 X 40	32.00	16.00	48.00	79.00
65 X 50	32.00	16.00	48.00	79.00
80 X 40	35.00	19.00	54.00	92.00
80 X 50	35.00	19.00	54.00	92.00
80 X 65	35.00	19.00	54.00	92.00



# OTHER RANGE OF PRODUCTS

THE NO. 1, FORGED  
STEEL PIPE FITTINGS & VALVES



Galvanized Pipe Nipples



Art No. CPS-1051

**Elbow Union**



Art No. CPS-1050

**Elbow Male/Male**



Pipe Nipples  
phosphate finish



Art No. CPS-1053

**Elbow Hot Galvanized**



Art No. CPS-1054

**Half Socket**



Art No. CPS-3061

**Socket**



Art No. CPS-1055

**Tee Male/Female**



Pipe Nipples  
Stainless Steel finish



Art No. CPS-3062

**Elbow Socket Weld  
IBR Approved**



Art No. CPS-3063

**Tee Socket Weld  
IBR Approved**



THE NO. 1, FORGED  
STEEL PIPE FITTINGS & VALVES

OUR ASSOCIATES



A Navratna Company



Punj Lloyd



TATA STEEL LIMITED



LARSEN & TOUBRO

JK Cement LTD



**VOLTAS**  
A TATA Enterprise

**ESSAR**



**JINDAL**  
STEEL & POWER



ब्रिज एण्ड रूफ कम्पनी (इण्डिया) लिमिटेड

Hindustan Petroleum Corporation Limited





# CREATIVE PIPING SOLUTIONS PVT. LTD.

*An ISO 9001:2015 & 14001:2015 Certified Company*



**Maharashtra Office :-** Shop No. A/1110/112, Ground Floor, Laxmi Building, Sant Sena Maharaj Marg, 2nd Kumbharwada, Girgaon, Mumbai-400004, Maharashtra, India



+91 7045212326 / 6375202125



+91-02266 394505



sales@creativeforged.com



**Manufacturing Unit-II:** 221/1, GIDC INDL.Area Umbergaon, Vapi, Gujarat 396171



works@creativeforgedfitting.com



+91-02266 394506



THE NO. 1, FORGED  
STEEL PIPE FITTINGS & VALVES



[www.creativeforged.com](http://www.creativeforged.com)